

Anatomage

TABLE

Cadavers

How to Use the Cardiovascular Tools

Table of Contents

How to Use the Blood Flow Icon	1
How to Use the Vascular Growth Tool	3
How to Use Full Body Blood Flow	5
How to Use Heart Motion	5

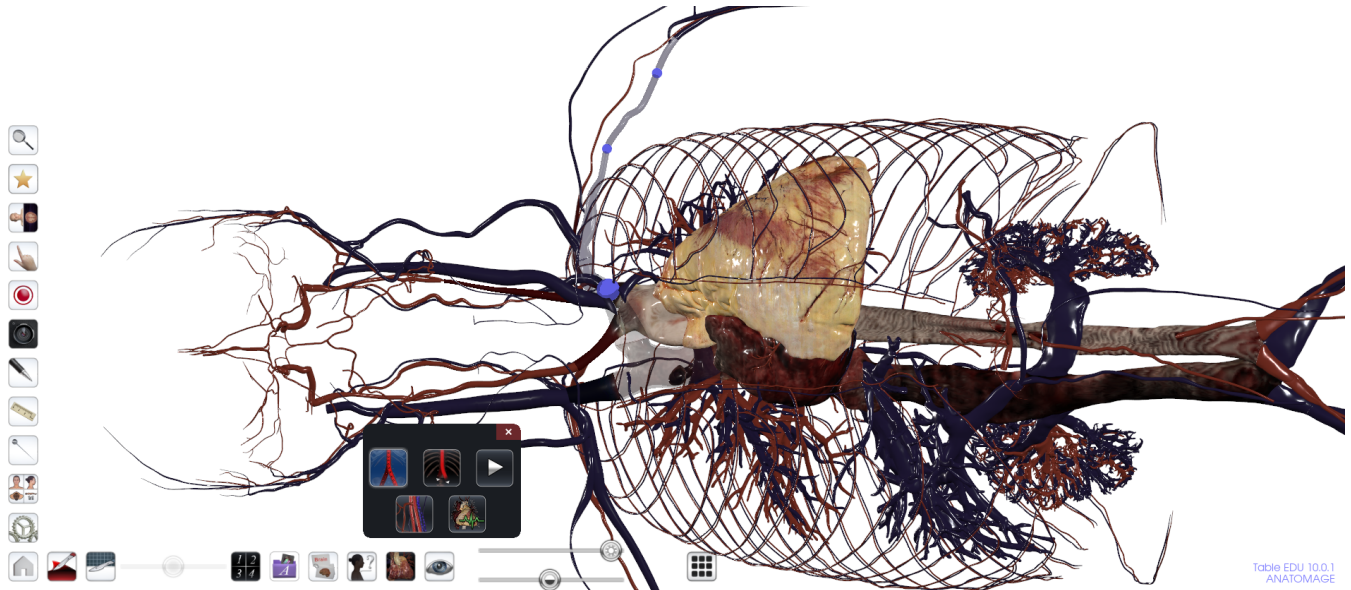
How to Use the Blood Flow Icon

Step 1: Tap the Cardiovascular Tools icon  and then tap on the Blood Flow icon

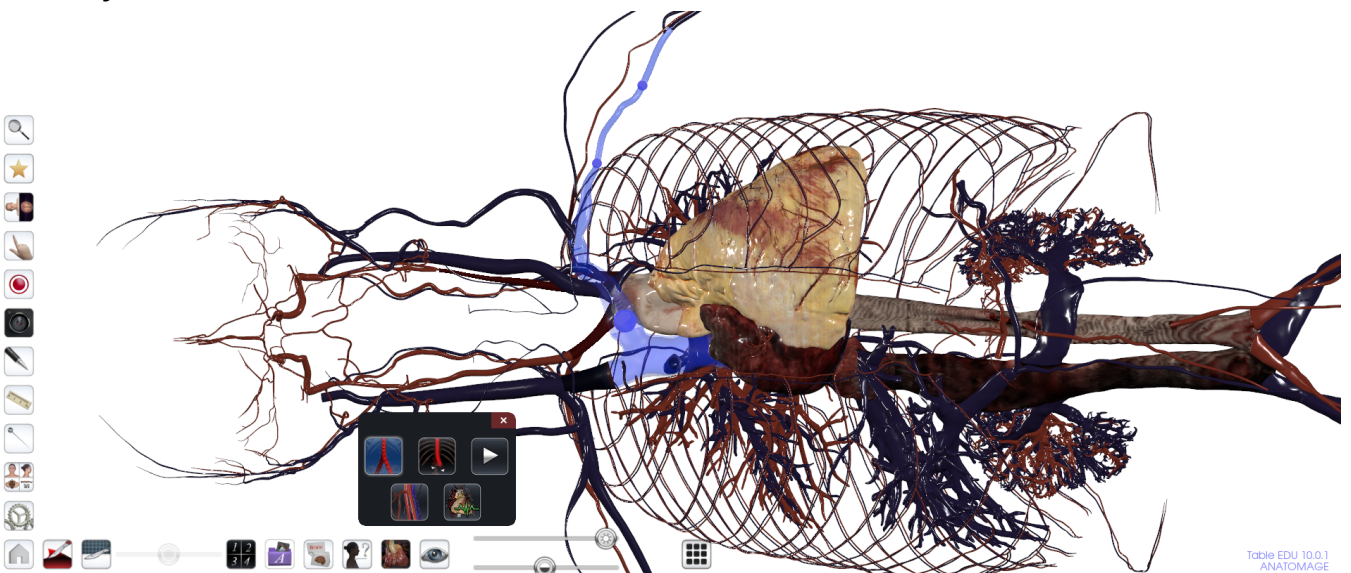


to engage the tool.

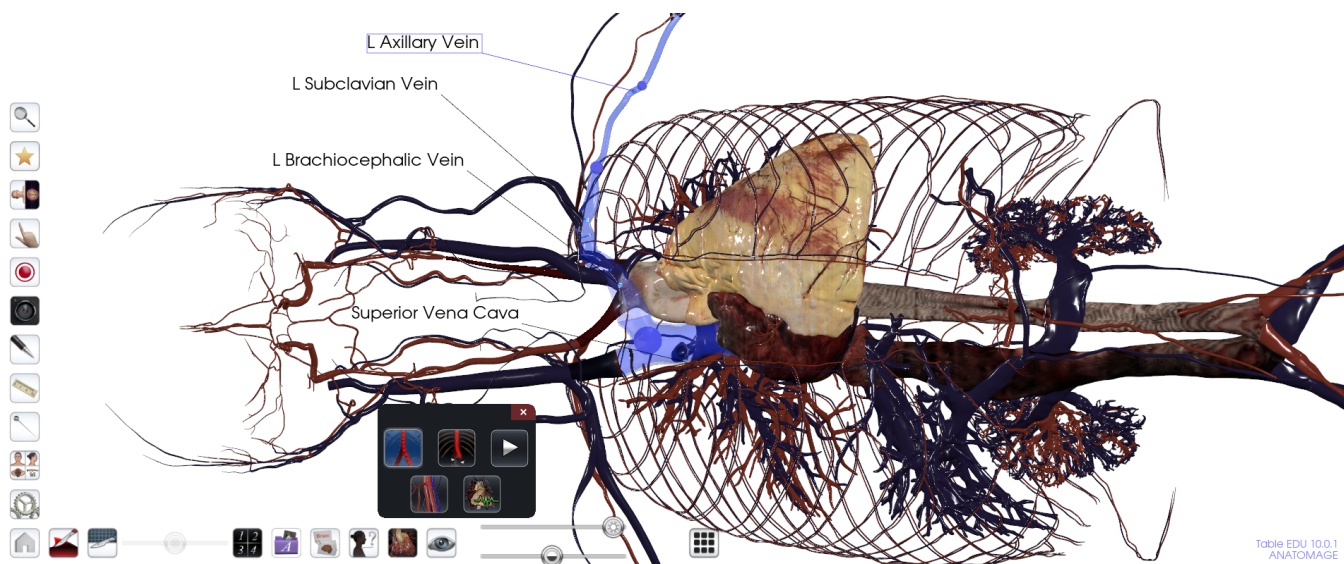
Step 2: Tap on the blood vessel that you would like to see blood flow for. The Table will automatically show dots representing the blood flow to or from the heart.



Step 3: Tap on the Blood Flow icon a second time to apply a flat color to your blood flow pathway.



Step 4: Tap the Blood Flow icon a third time to annotate structures the blood is flowing through.



Step 5: Tap the Blood Flow icon a fourth time to disengage it.

Note: This tool is also available in the Action Menu of arteries and veins



How to Use the Vascular Growth Tool

Step 1: Tap the Cardiovascular Tools icon  and then tap on the Vascular Growth icon




to engage the tool.

Step 2: Tap on the blood vessel that you would like to see vascular growth for.

- For arteries, the Table will automatically remove the vascular pathway, and the vessels will then grow from the ascending aorta and fill out the branches.
- For veins, the Table will automatically remove the vascular pathway, and the vessels will then grow from the vessel you selected to the heart.



Step 3: Tap the pause icon  at any time to pause the vascular growth in-place. Tap it again to resume. The animation will automatically loop unless paused.

Step 4: Tap on the Vascular Growth icon a second time to apply a flat color to the growing vessel.

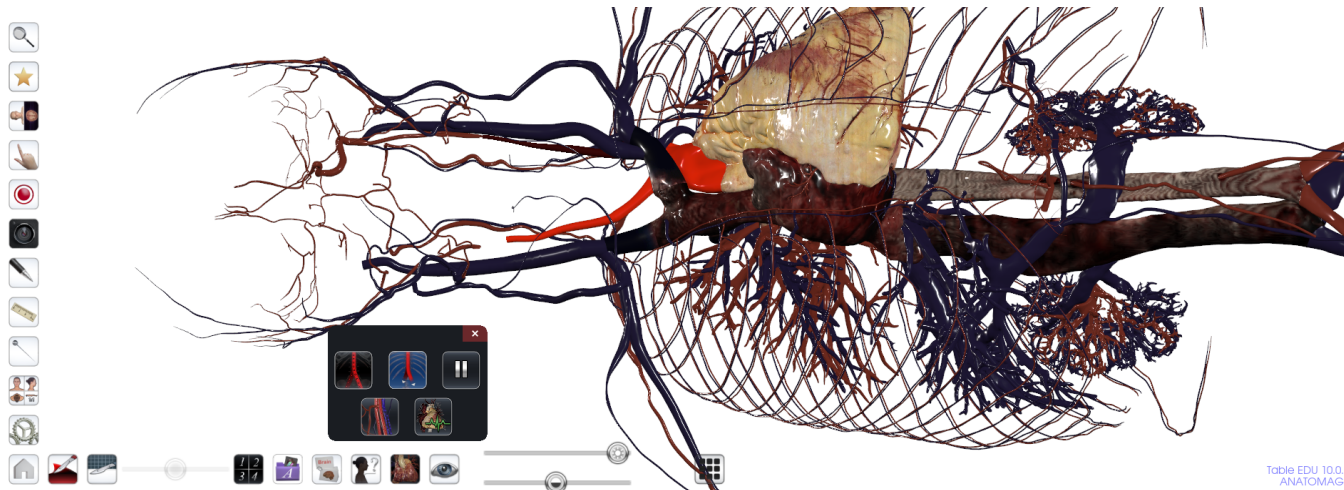
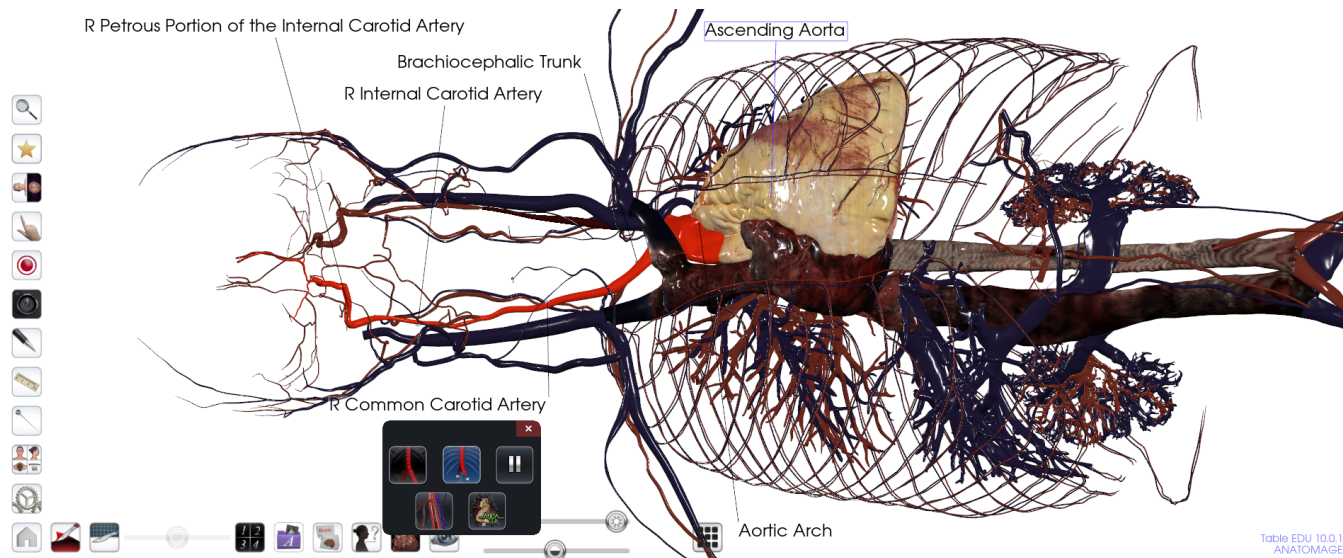


Table EDU 10.0.1
ANATOMAGE

Step 5: Tap on the Vascular Growth icon a third time to annotate the vessels involved in the pathway




Step 6: Tap the Vascular Growth icon a fourth time to disengage it.

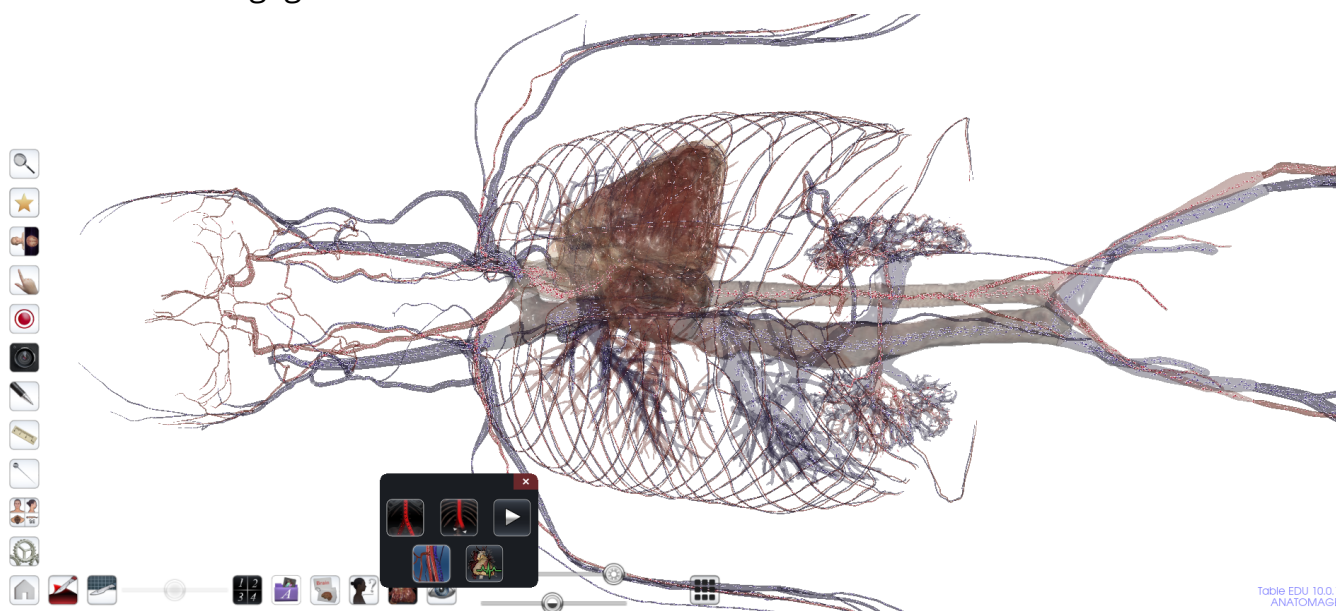
Note: This tool is also available in the Action Menu of arteries and veins




How to Use Full Body Blood Flow

Step 1: Tap the Cardiovascular Tools icon  and then tap on the Full Body Blood Flow

icon  to engage the tool.




Step 2: Tap on the Full Body Blood Flow icon  again to turn off blood flow.

Note: It is not recommended to leave this feature on at all times, as it could impact software performance.

How to Use Heart Motion

Step 1: Tap the Cardiovascular Tools icon  and then tap on the Heart Motion icon

 to engage the tool. This will cause the cadaver's heart to be replaced with a beating heart model. This model is fully interactive. This will automatically disengage non-compatible tools (Dissection, Learning Assistant).

Step 2: Tap on the Cardiovascular Tools icon and then tap on the Heart Motion icon again to turn off heart motion.

Note: It is not recommended to leave this feature on at all times, as it could impact software performance.