

# *Anatomage*

# TABLE

## **Cadavers**



### How to Use the Explore Tool

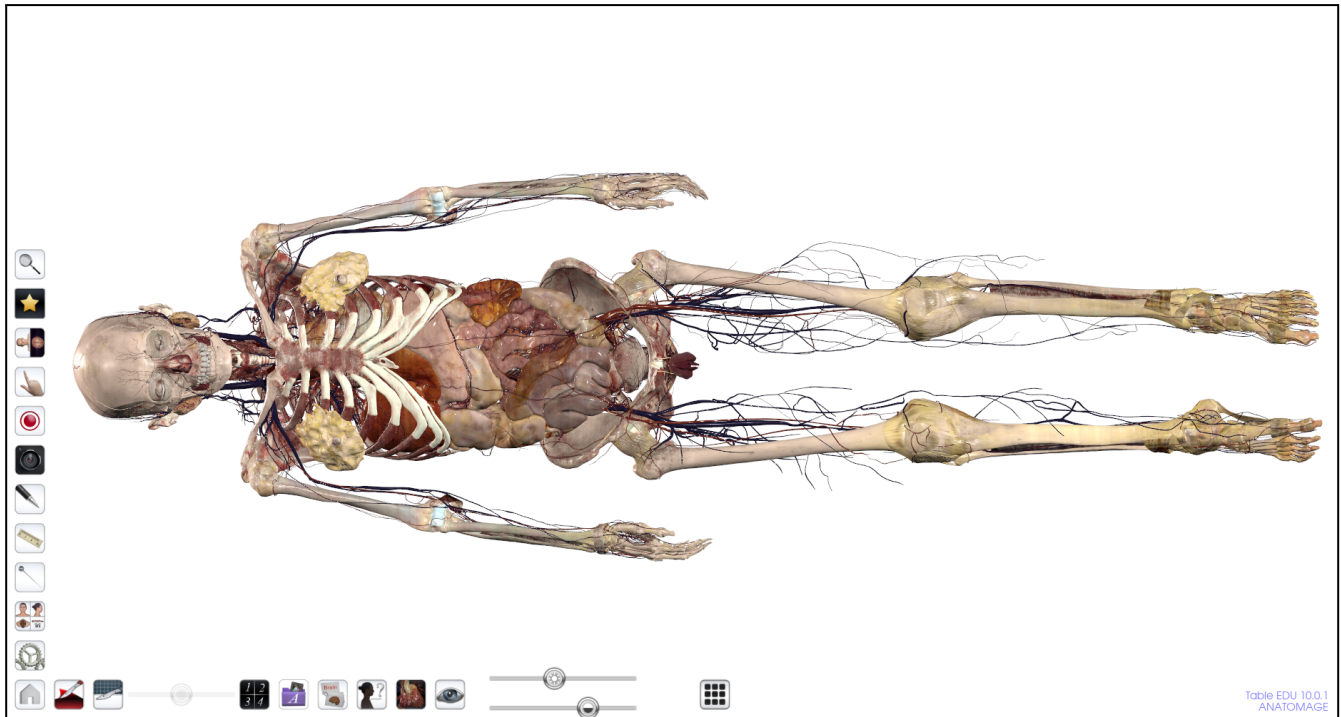
#### **Table of Contents**

How to Use the Removal Tool	1
How to Use the Isolation Tool	5

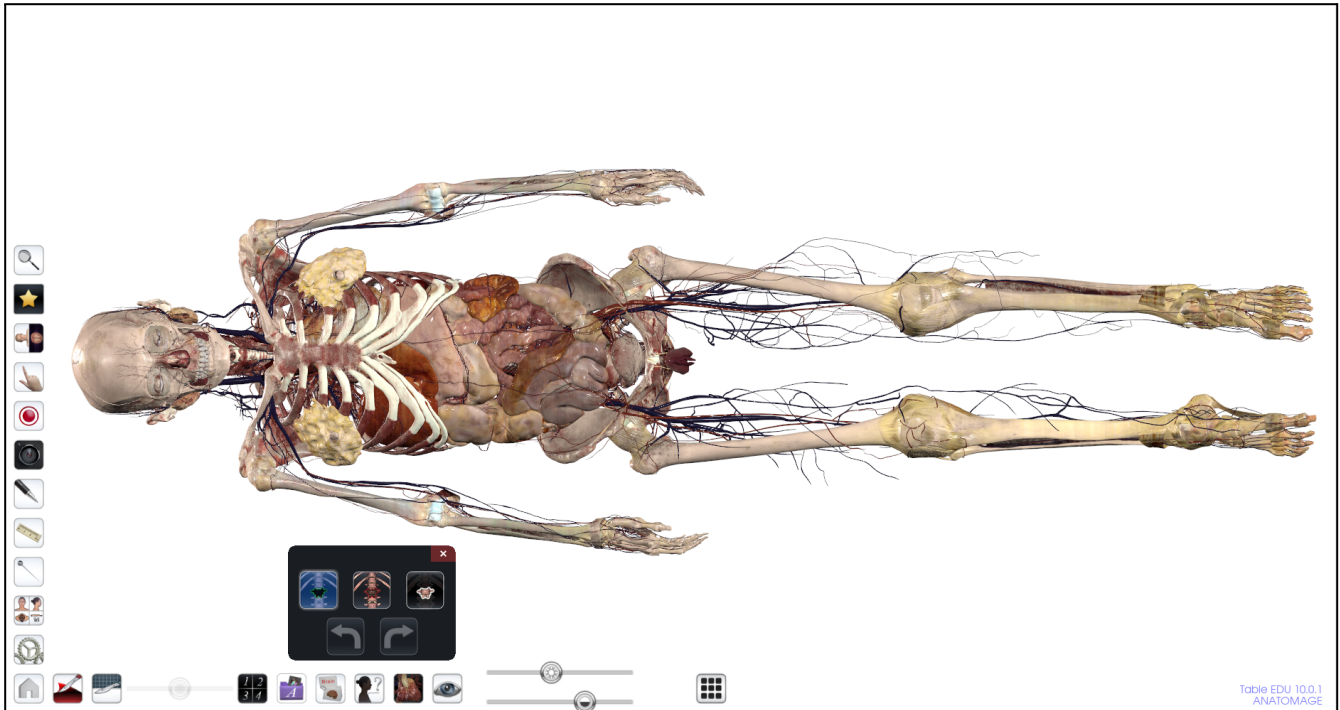
## How to Use the Removal Tool

Step 1: Single tap the explore tool icon , the icon will expand to display the

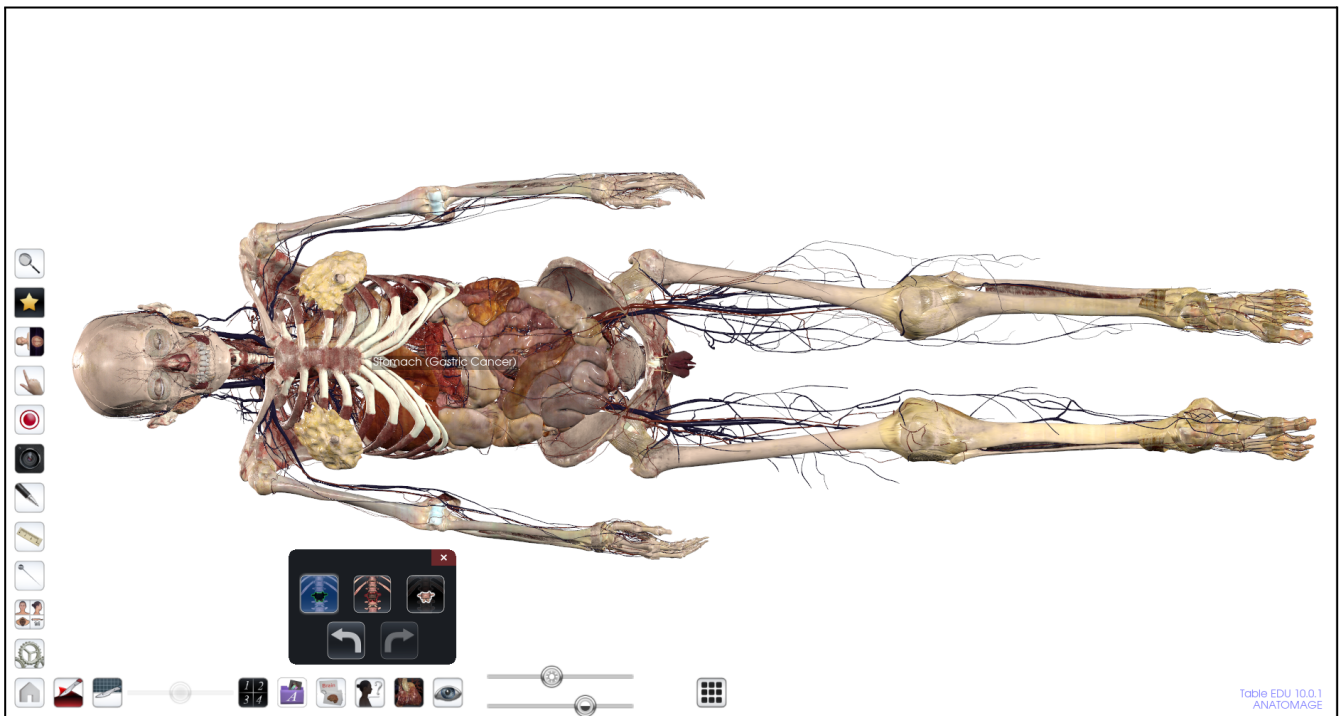
following icons     .




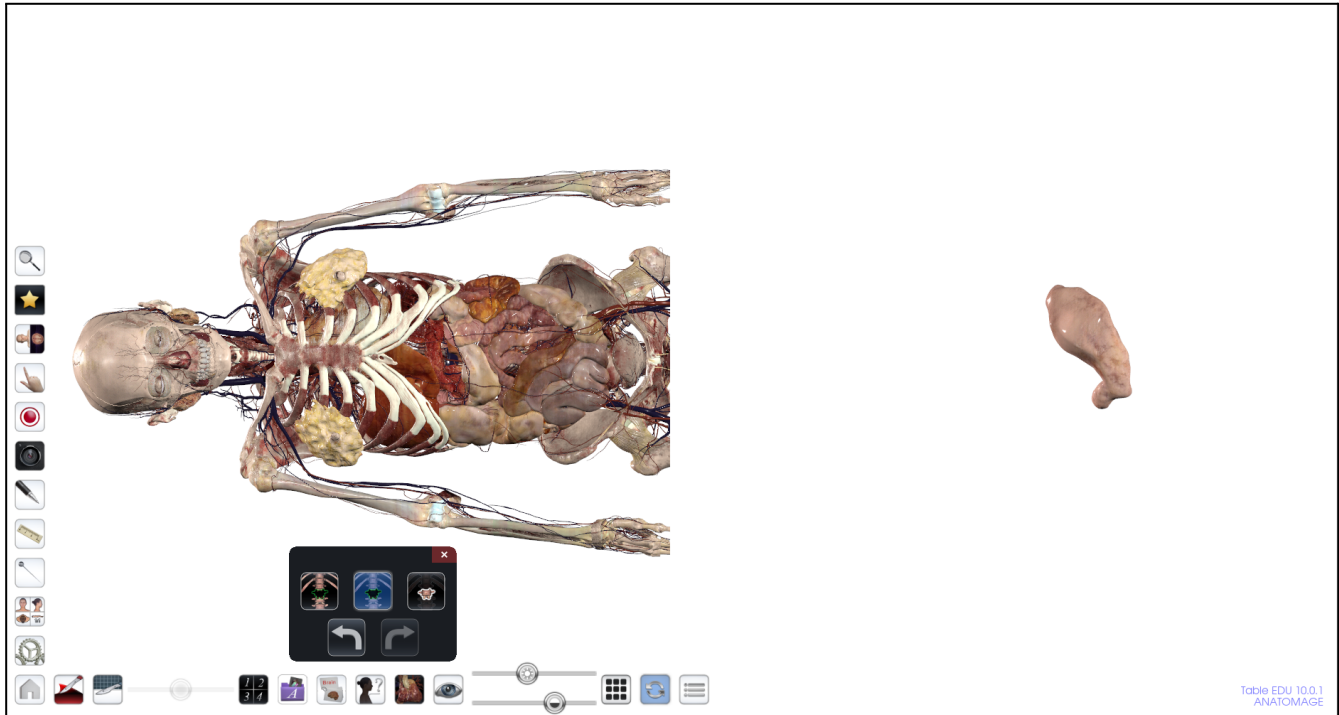
Step 2: Tap on the removal tool,  so it is highlighted blue.



Step 3: Tap a structure on the cadaver. This will remove it and label the structure that was removed.




Step 4: When a structure is removed, tapping on this icon  will show the removed structure on the right monitor while the 3D stays on the left monitor.





Step 5: There will be a highlighted circle arrow icon on the bottom of the right monitor

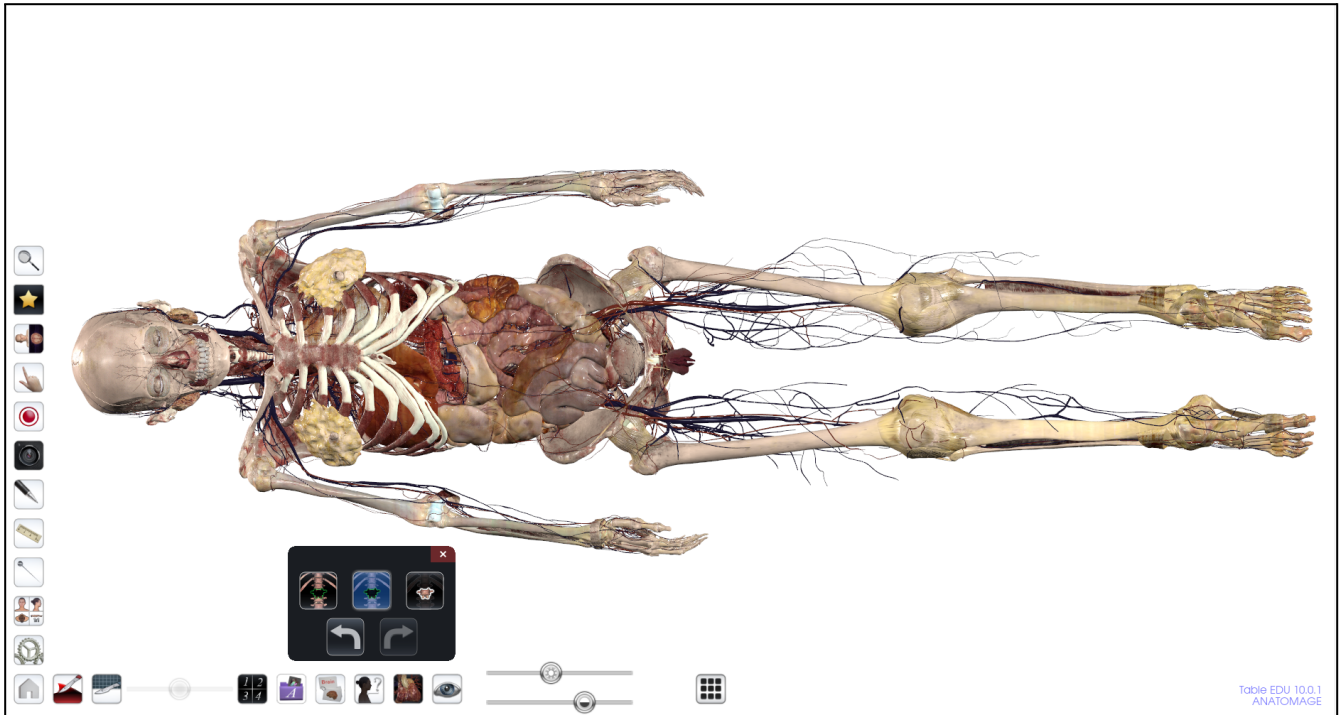


. This means that the two images are synced meaning when you rotate one of the

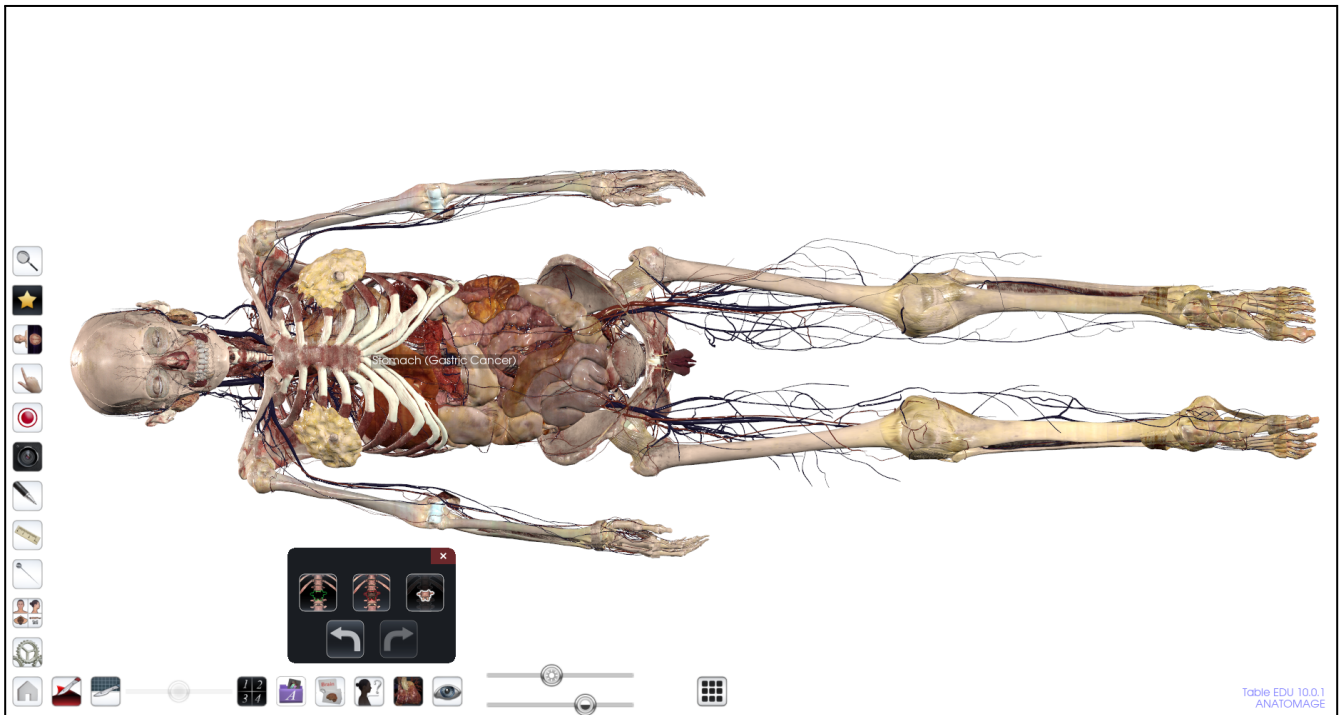
images, the other image will rotate with it. When this icon is turned off , you will be able to rotate the structure individually and the cadaver will stay stationary.

Step 6: Tap the Undo icon  on the explore menu to replace and label the

structure. Tap the now highlighted icon in the explore menu  to return to full screen view.

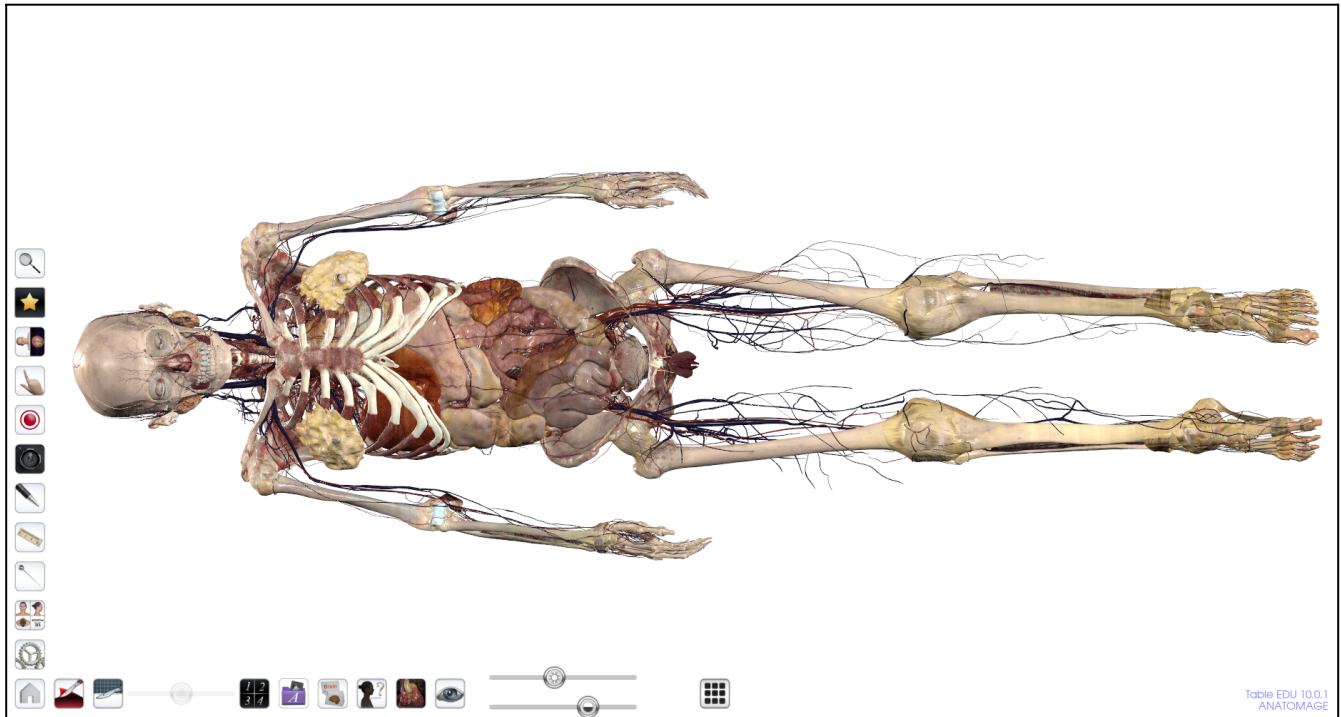


Step 7: Tapping the Redo icon will again remove the structure and label it.

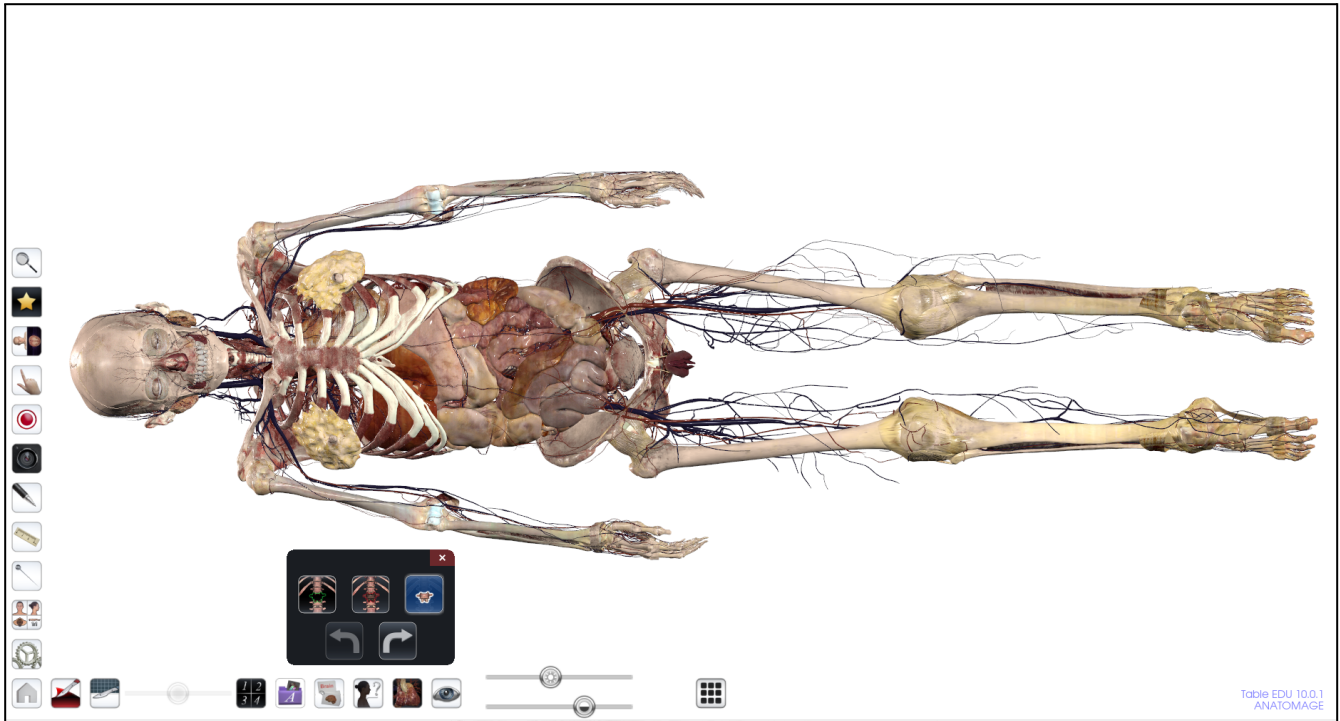


## How to Use the Isolation Tool

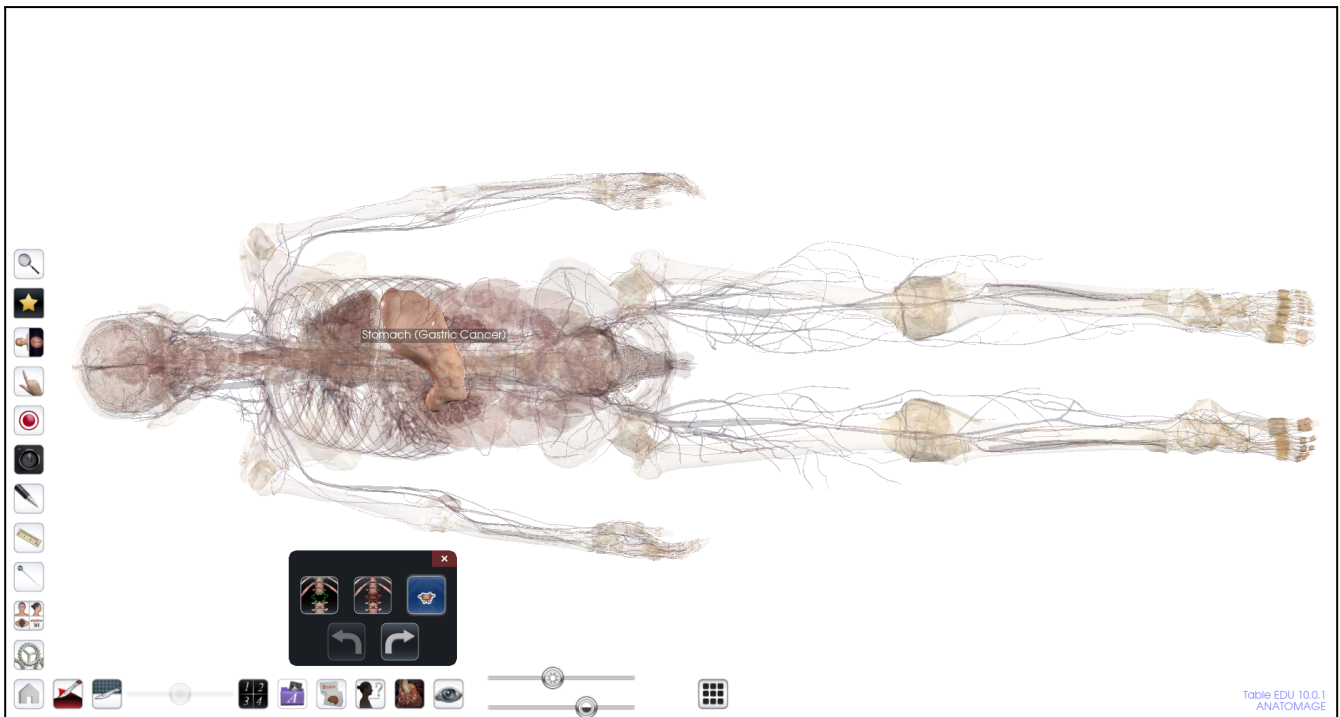
Step 1: Single tap the explore tool icon , the icon will expand to display the following icons .



Step 2: Tap on the isolation tool,  so it is highlighted blue.

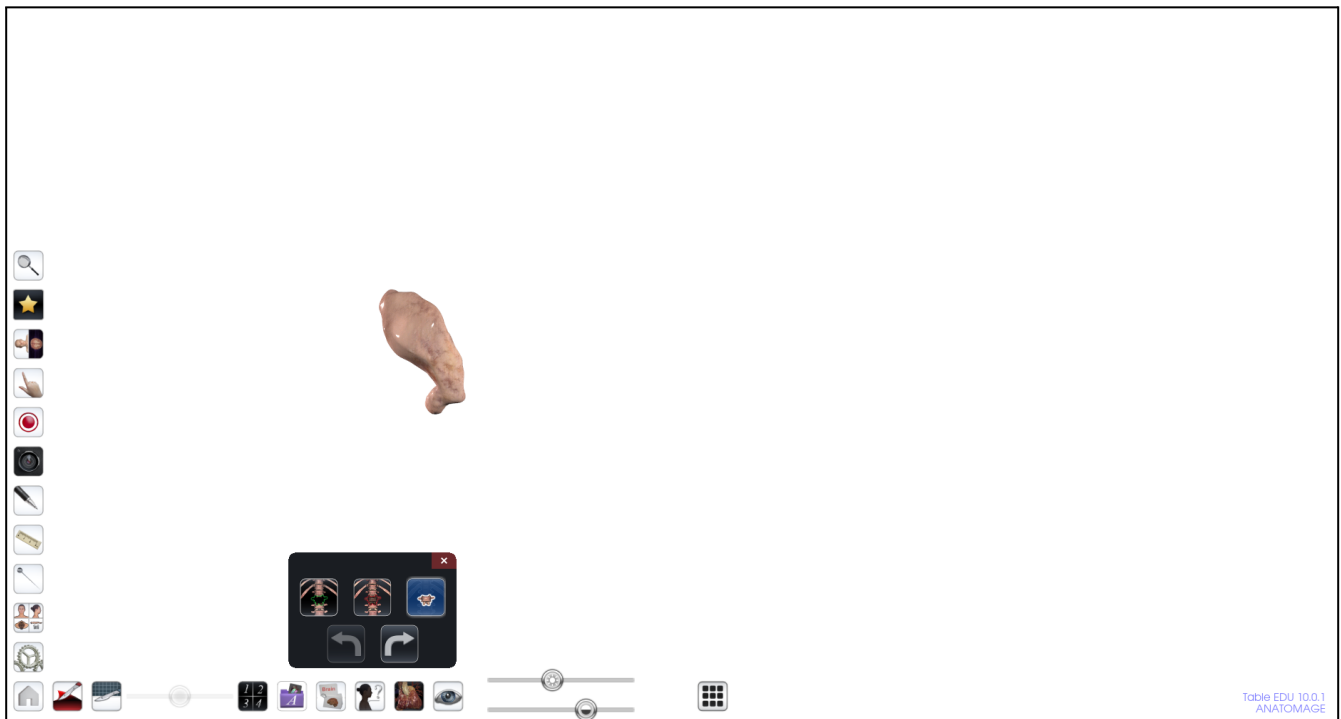


Step 3: Tap on a structure you want to isolate. In this case, The stomach has been tapped. The stomach will be labeled and stay visible. All other structures will become transparent.

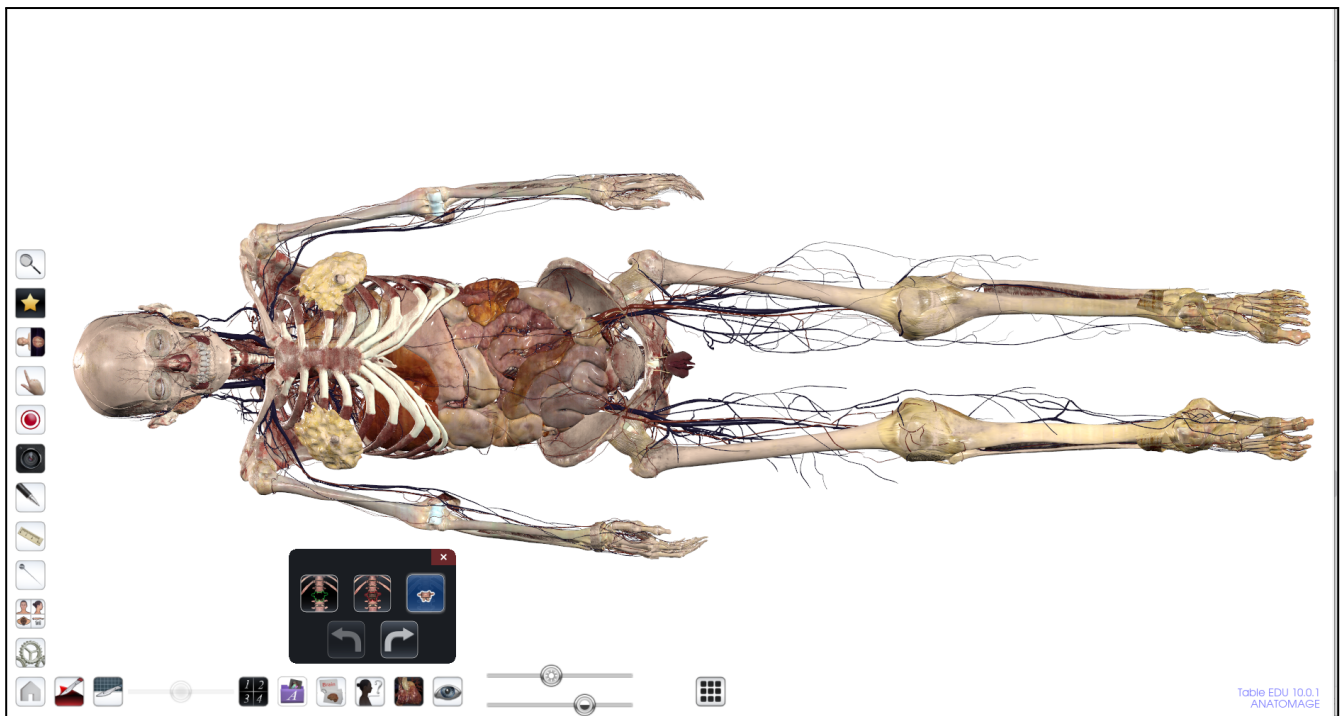


Step 4: Tap on the isolation tool icon again. All other structures will be removed, isolating


the stomach on its own. The stomach can now be manipulated.



Step 5: Tap on the isolation tool a third time. All other structures will come back into view.





Step 6: Tapping on the Undo icon  during step 3 or 4 will bring all structures back into view as well.