

Anatomage

TABLE

Cadavers


How to Use the Learning Assistant Tool

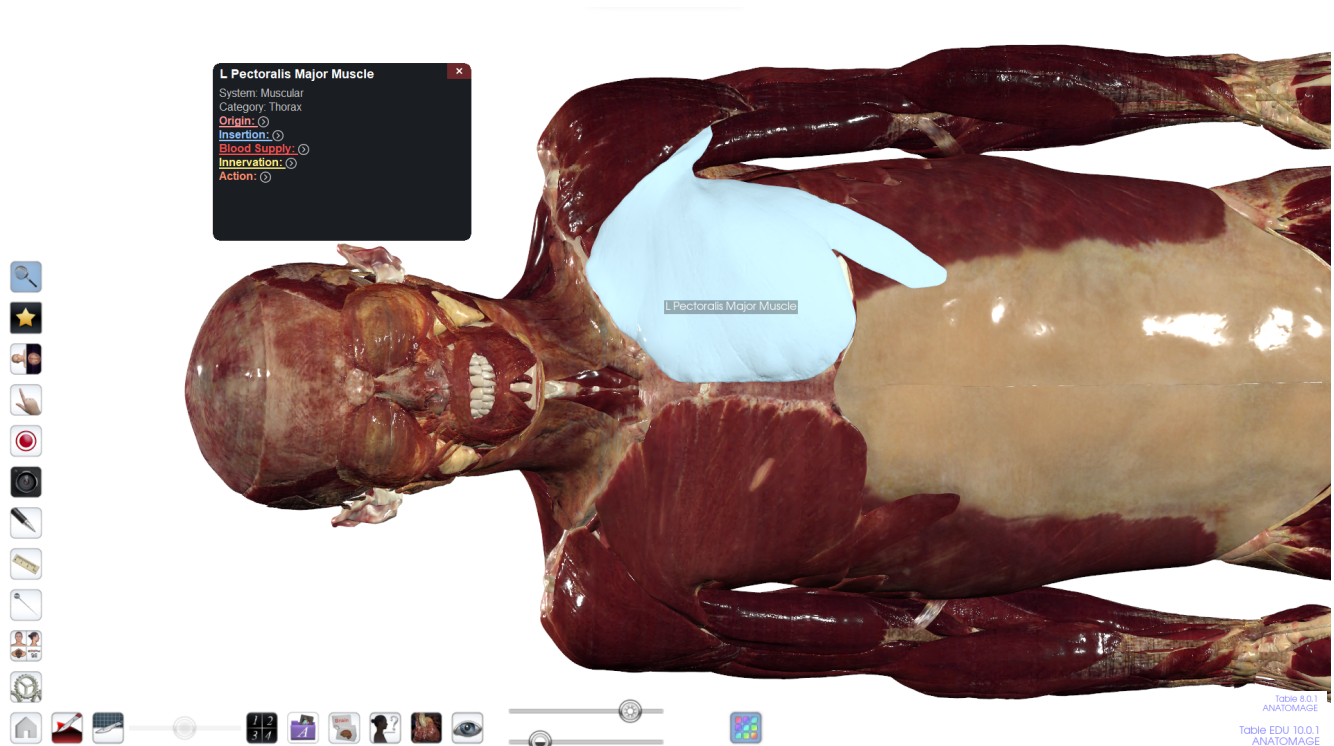
Table of Contents

How to use the Learning Assistant Tool

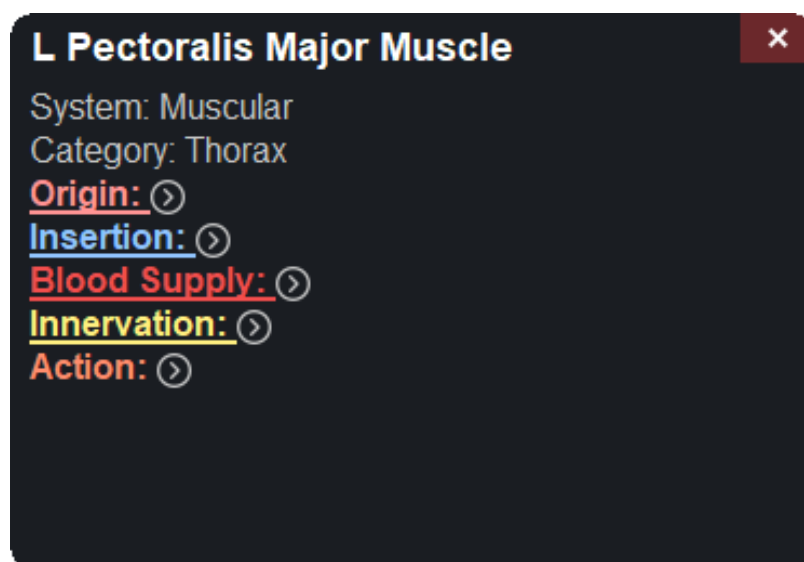
1

How to use the Learning Assistant Tool

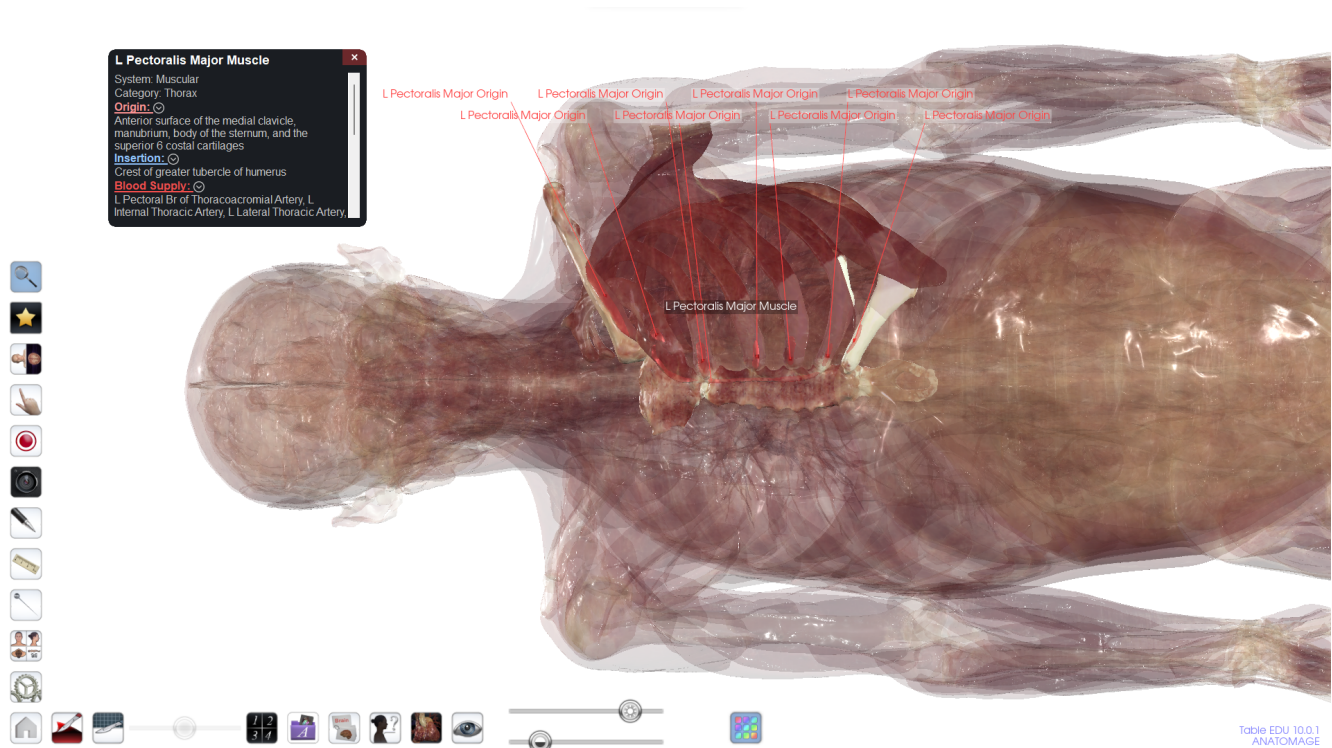
Step 1: Tap on any structure. Then tap on the Learning Assistant icon  to open Learning Assistant dialog.



Step 2: The dialog will show the structure name, system, and category. It will also include options to explore Origin, Insertion, Blood Supply, Innervation, and Action.



Step 4: Tap on each underlined topic within the dialog to isolate the structure and turn on cadaver transparency and relevant annotations.



Step 3: Tap on the arrow next to each underlined topic within the dialog to expand.

