

Anatomage

TABLE

Cadavers

How to Use the Measurement Tool

Table of Contents

How to Take a Linear Measurement (3D)	1
How to Take an Angular Measurement (3D)	3
How to Take an Area Measurement (3D)	5
How to Take a Curved Measurement (3D)	7
How to Take a Linear Measurement (2D)	9
How to Take an Angular Measurement (2D)	11
How to Take an Area Measurement (2D)	13
How to Take a Curved Measurement (2D)	15
How to Clear a Selected Measurement	17
How to Clear All Measurements	19

How to Take a Linear Measurement (3D)

Step 1: Single tap the measurement tool icon



. The icon will expand to display the

following icons



.



Step 2: Single tap the linear measurement tool icon



.

Step 3: Single tap the head of the femur to place the first measurement endpoint, as indicated by a red dot.



Step 4: Single tap the patella to place the second measurement endpoint, as indicated by a red dot, connected blue line, and measurement text (in mm).



How to Take an Angular Measurement (3D)

Step 1: Single tap the measurement tool icon



. The icon will expand to display the

following icons



Step 2: Single tap the angular measurement tool icon



Step 3: Single tap the pubis to place the first measurement endpoint, as indicated by a red dot.



Step 4: Single tap the head of the femur to place the second measurement midpoint, as indicated by a red dot.



Table EDU 10.0.1
ANATOMAGE

Step 5: Single tap the patella to place the third measurement endpoint, as indicated by a red dot, connected blue line, and angular measurement text (in mm and degrees).



Table EDU 10.0.1
ANATOMAGE

How to Take an Area Measurement (3D)

Step 1: Single tap the measurement tool icon



. The icon will expand to display the

following icons



Step 2: Single tap the area measurement tool icon



.

Step 3: Single tap where you would like to place the first point. This will be indicated by a red dot.



Step 4: Continue to place points surrounding the area you want to take a measurement of. When you are finished placing the points, tap back on the measurement tool to get a measurement in mm².



How to Take a Curved Measurement (3D)

Step 1: Single tap the measurement tool icon



. The icon will expand to display the

following icons



.



Step 2: Single tap the area measurement tool icon

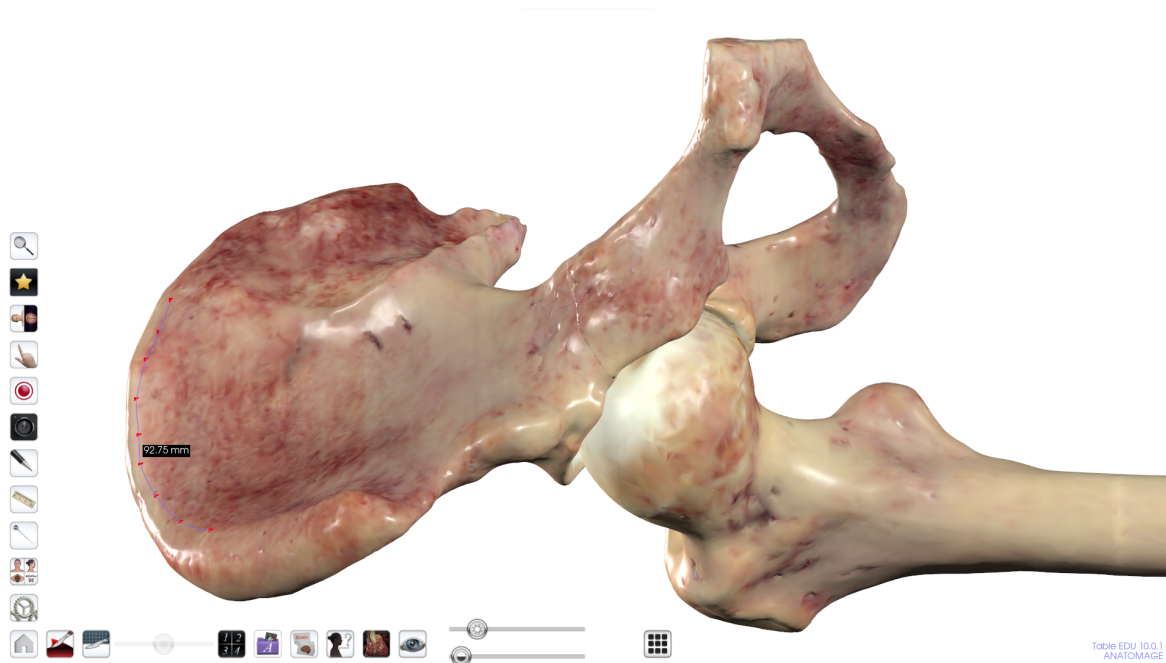


.

Step 3: Single tap where you would like to place the first point. This will be indicated by a red dot.



Step 4: Continue to place points along the curved line you would like to take the measurement of. When you are finished placing all points, tap on the measurement icon again to get the measurement in mm.



How to Take a Linear Measurement (2D)

Step 1: Single tap the measurement tool icon



. The icon will expand to display the

following icons



Step 2: Single tap the linear measurement tool icon



Step 3: Single tap the lateral side of the head of the femur to place the first measurement endpoint, as indicated by a red dot.



Step 4: Single tap the medial side of the head of the femur to place the second measurement endpoint, as indicated by a red dot, connected blue line, and measurement text (in mm).



How to Take an Angular Measurement (2D)

Step 1: Single tap the measurement tool icon



. The icon will expand to display the

following icons



Step 2: Single tap the angular measurement tool icon



.

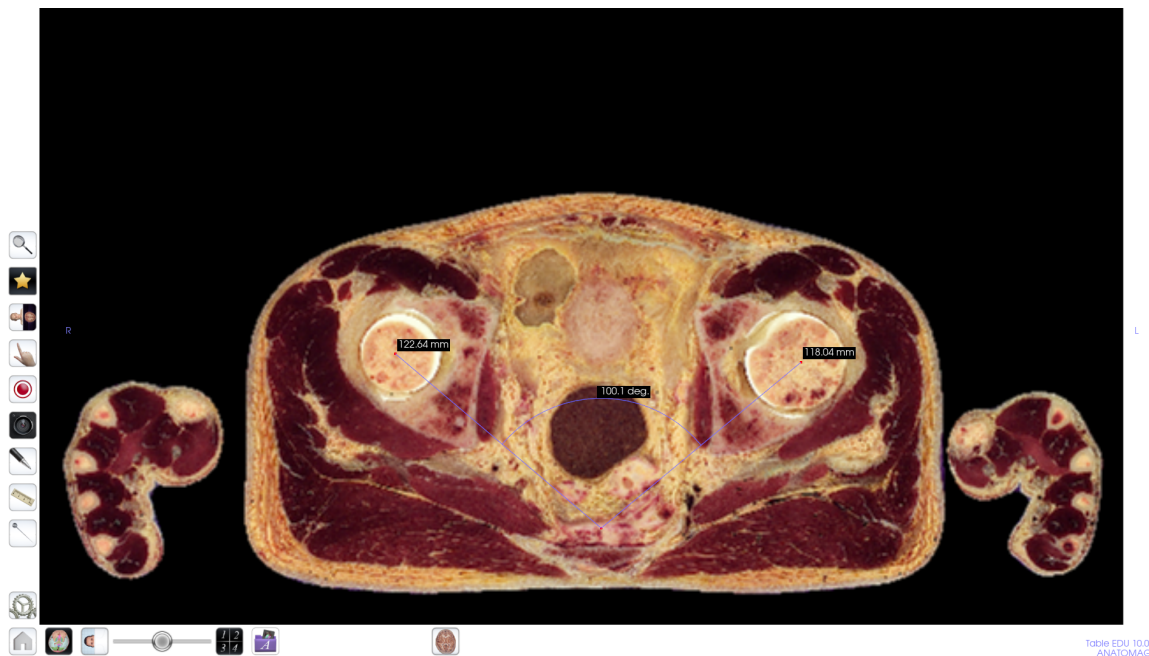
Step 3: Single tap the right head of the femur to place the first measurement endpoint, as indicated by a red dot.




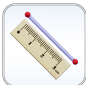
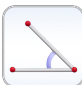
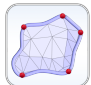
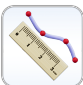


Step 4: Single tap the coccyx to place the second measurement midpoint, as indicated by a red dot.



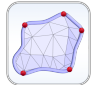
Step 5: Single tap the left head of the femur to place the third measurement endpoint, as indicated by a red dot, connected blue line, and angular measurement text (in mm and degrees).



How to Take an Area Measurement (2D)

Step 1: Single tap the measurement tool icon . The icon will expand to display the following icons      .



Step 2: Single tap the area measurement tool icon .

Step 3: Single tap where you would like to place the first point. This will be indicated by a red dot.



Step 4: Continue to place points surrounding the area you want to take a measurement of. When you are finished placing the points, tap back on the measurement tool to get a measurement in mm².



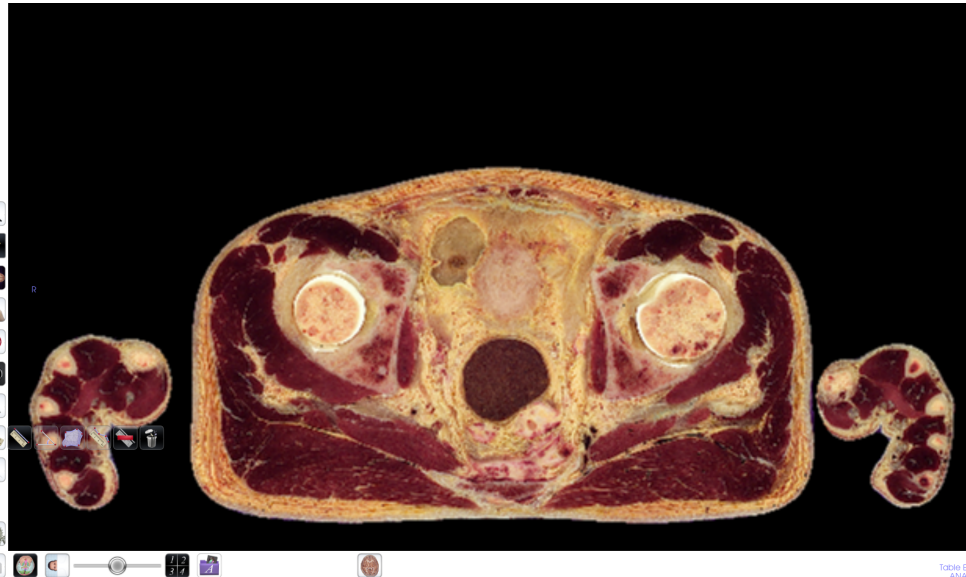
How to Take a Curved Measurement (2D)

Step 1: Single tap the measurement tool icon



. The icon will expand to display the

following icons



Step 2: Single tap the area measurement tool icon



Step 3: Single tap where you would like to place the first point. This will be indicated by a red dot.



Step 4: Continue to place points along the curved line you want to take a measurement of. When you are finished placing the points, tap back on the measurement icon to get a measurement in mm.



How to Clear a Selected Measurement

Step 1: Single tap an existing measurement (in mm) to highlight the text in red.



Step 2: Single tap the measurement tool icon . The icon will expand to display the following icons      .



Step 3: Single tap the selected measurement erase icon



How to Clear All Measurements

Step 1: Single tap the measurement tool icon



. The icon will expand to display the

following icons



Step 2: Single tap the erase all measurements icon

