

Anatomage

TABLE

Cadavers


How to Use Presets


Table of Contents

How to Save a Preset	1
How to Reorder Presets	3
How to Remove Presets	4
How to Select All Presets	5
How to Export Presets	6
How to Import Presets	7
How to Add Presets to a Folder	8
How to Create and Access a Preset Folder	9
How to Use Quick View	11

How to Save a Preset

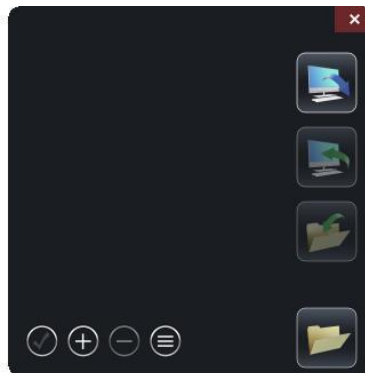
Quick Save Method


Step 1: Single-tap the preset icon .

Step 2: Tap on the plus icon  to create a preset with the current view. It will automatically be numbered in chronological order.


Full Menu Method

Step 1: Tap the gear icon  to open up the full preset menu.



Step 2: Tap the plus icon  at the bottom of the menu. The following keypad will open.

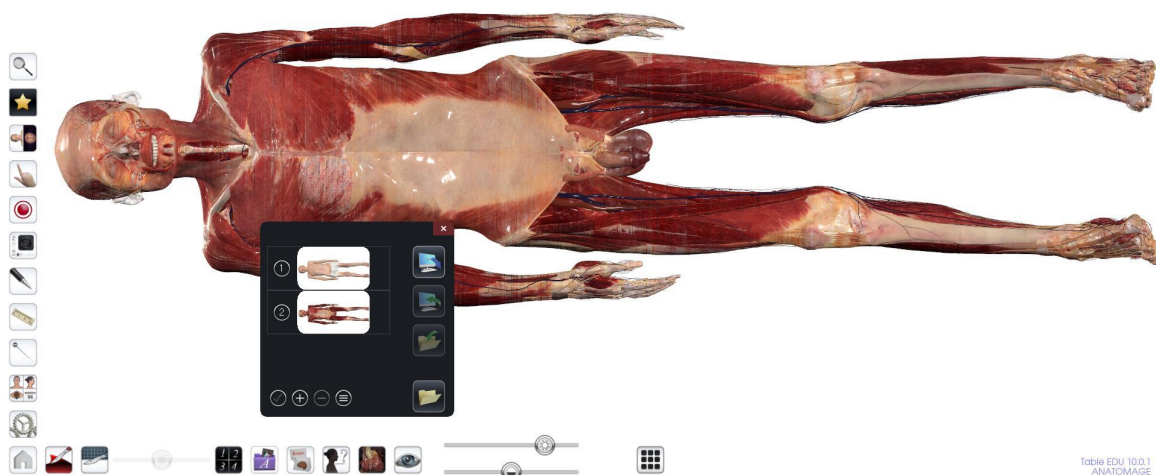


Step 3: Tap on the number that you would like to save the preset as, then tap the check mark .



Step 4: To save a second preset as preset "2", create another view that you would like to save, then follow the same steps as above, but tap on "2" on the keypad. This will save your new image as preset 2.


NOTE: You can save presets at any number you want. They do not have to be saved in chronological order if created from the preset menu.

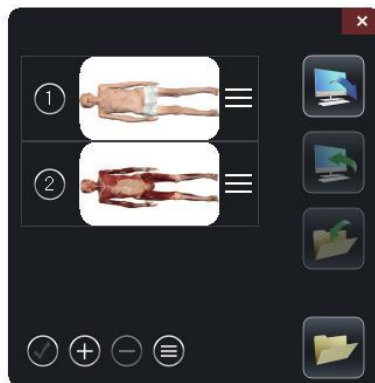


How to Reorder Presets

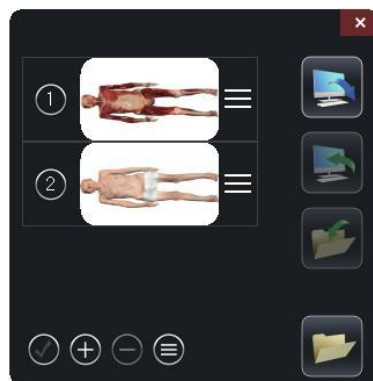
Step 1: Open the preset menu by following the steps above.



Step 2: When in the preset menu, tap on the stack of three bars icon, . Each preset will now have a stack of three bars next to it.

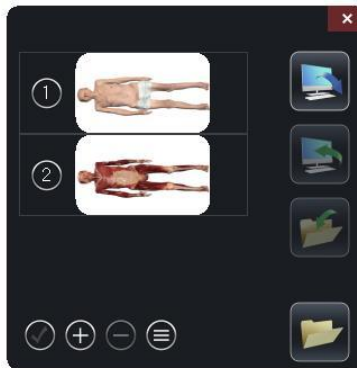


Step 3: By tapping on the individual preset's stack of three bars, hold and drag so you can switch the order of any presets you have in the preset menu.

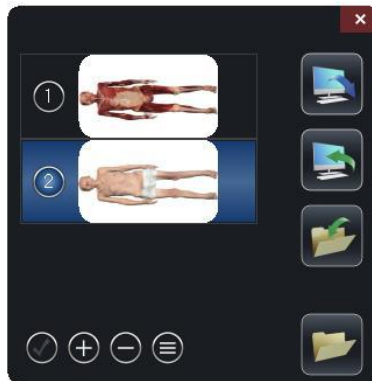



How to Remove Presets

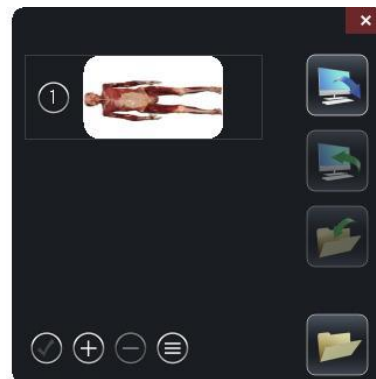
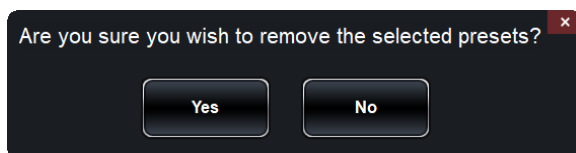
Step 1: Open the preset menu by following the same steps as above.




Step 2: Highlight the number of the preset you would like to remove.



Step 3: Tap on the minus icon  at the bottom of the preset menu to remove this preset. A message box will pop up asking if you are sure you want to delete it. Tap yes and the preset will be removed.



How to Select All Presets

Step 1: If you have multiple presets and want to select all to either delete, export, or add to folder, tap the check mark at the bottom of the preset menu .

Step 2: All the presets are now selected and you can either delete, export, or add all of them to a folder.




How to Export Presets

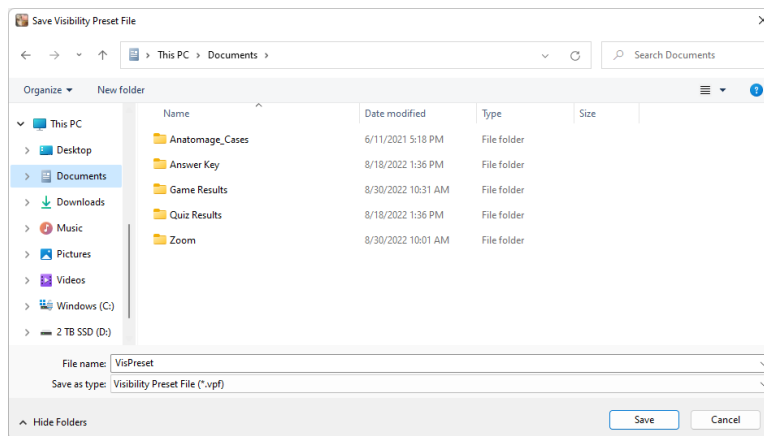
Step 1: Open the preset menu by following the steps on page 1.

Step 2: You can either choose to export an individual preset by tapping on that specific number, or you can export the whole group of presets by selecting all.

Step 3: To select all, follow the steps in the “How to Select All Presets” section.



Step 4: When all of your presets are selected, tap on the Export VPF icon  on the preset menu. The save window will appear. Give this VPF file a name and save it to a folder, PC location, or USB.



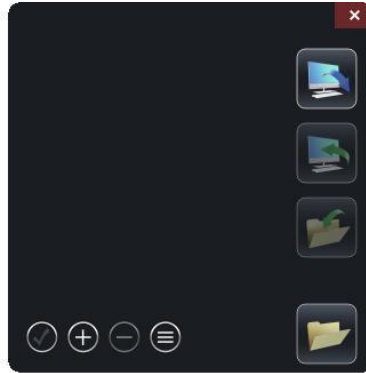
NOTE: Include the name of the cadaver you made these presets in (ex. Hans) since these presets will only load in correctly in the scan you made them in.

NOTE: VPF is a 3D file type. This file type will not open on any other computer. This will only open when imported back into the Table software.

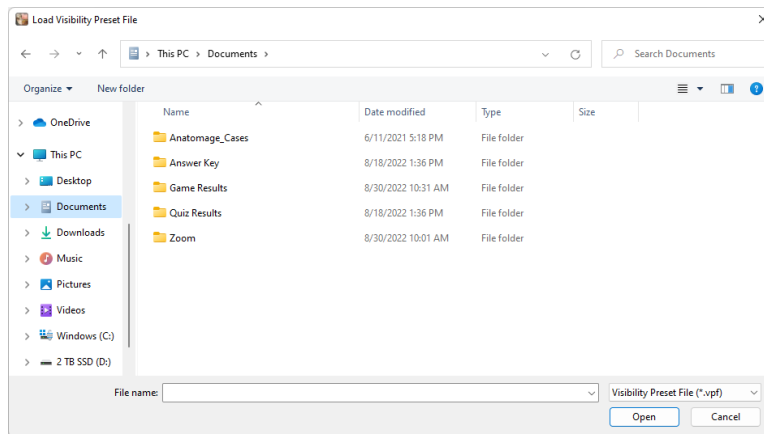
How to Import Presets

How to Import Presets

Step 1: Open the preset menu by following the steps on page 1.




Step 2: Tap on the Import VPF icon . The open window will appear.




Step 3: Locate the VPF file you want to load in and tap open. The preset menu will repopulate with this VPF file.

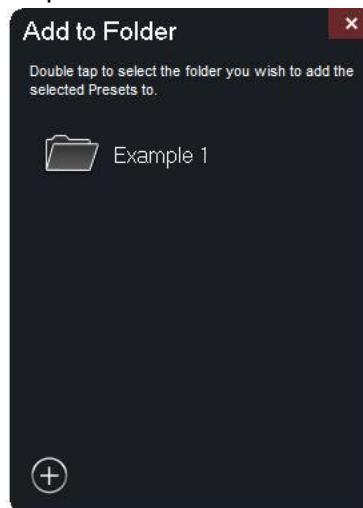
How to Add Presets to a Folder

Step 1: Open the preset menu by following the steps on page 1.

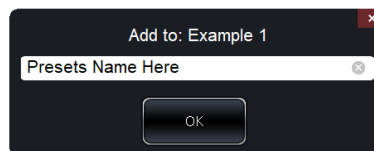
Step 2: You can choose to add a specific preset to a folder by tapping on that preset's number, or you can add all presets by tapping the check mark  to select all.



Step 3: When the desired presets are selected, tap on the Add to Folder icon . A prompt will appear where you can create a new folder or select the folder (previously created) you would like to add the presets.




Step 4: Double-tap on the desired folder. You will be asked to name the preset you are saving.




Step 5: Tap ok. The presets have now been added to the desired folder.

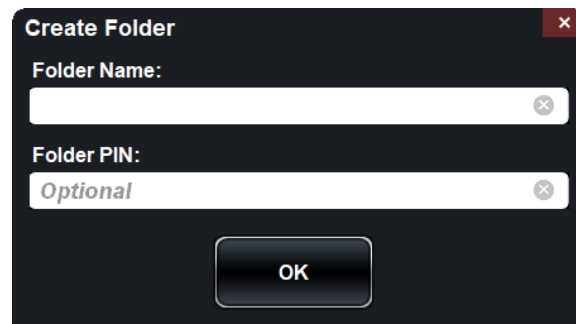
How to Create and Access a Preset Folder

Step 1: Open the preset menu by following the steps on page 1.

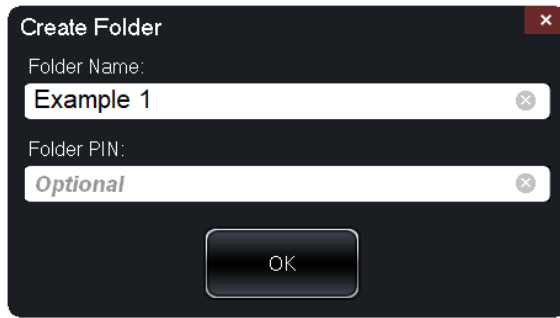
Step 2: Tap on the folder icon  at the bottom of the preset menu to open the preset folder menu.



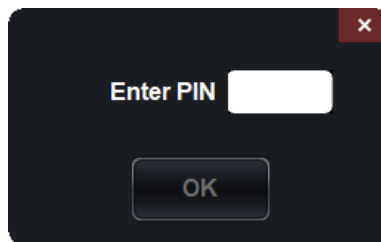
Step 3: To add a new folder, tap on the plus icon  at the bottom of the folder menu. This will open up a create folder window.



Step 4: Give the folder a name. You can also choose to give the folder a pin. This will lock the folder and no one will be able to open the folder unless the pin is entered. The pin is any number code you would like.




Step 5: To access a folder with a pin, tap on the folder from the preset folder menu. You will be asked to enter the pin.



Step 6: After you enter the pin, you will have access to all presets in the folder.



NOTE: If you do not have a pin on a folder, tapping on the folder will open it and give you access to the presets.

How to Use Quick View


Step 1: Single-tap the preset icon  .

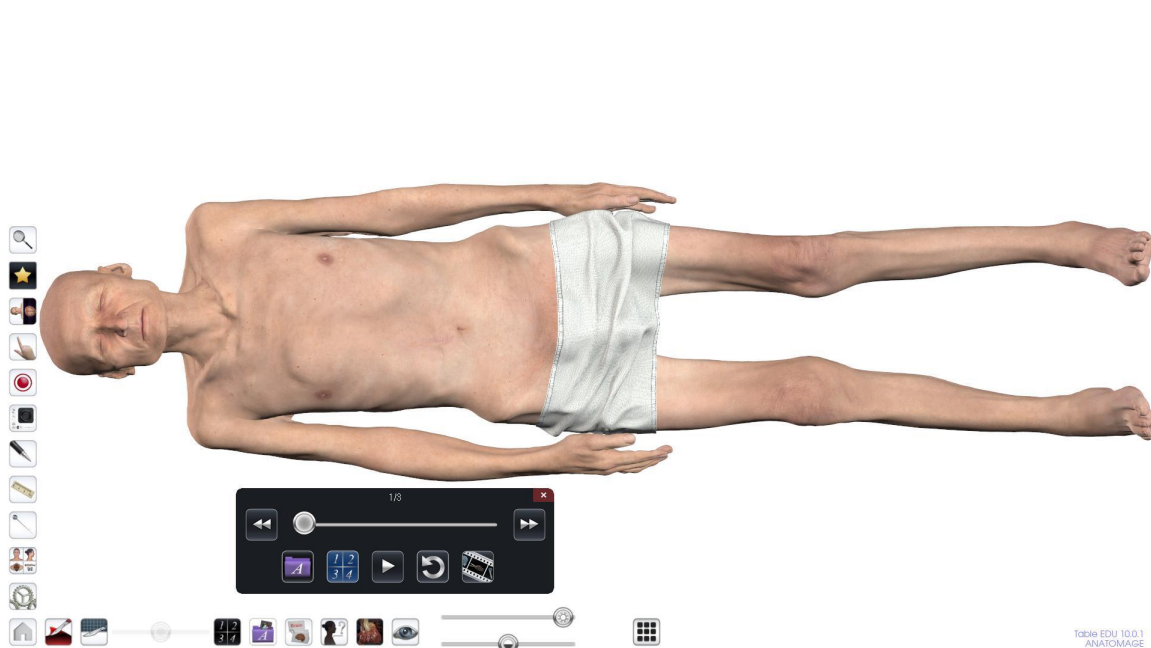
Step 2: Tap on the Quick View icon  to visualize your presets in a video style.

Step 3: The quick menu will appear showing the number of presets you have.

Step 4: Tap the play icon  to play the video. You can tap the loop icon  to loop through the video.

Step 5: The presets icon  will reproduce the presets in your preset menu. The

Anatomage created folder  will allow you to select a video sequence from our library.





Step 6: Tap the movie capture icon to export the video to the PC. Notice you can edit the frames per view or the frames per second to create a smoother or faster video, respectively. You can also add a logo at the end of the video by browsing an image file.

Movie Capture

Action
Current View Sequence

Movie File Location
File Name:
C:\Users\
Change

Available Codecs Installed In This Computer
Intel IYUV codec
Configure

Video Frames and Playing Time
Frames/View: 36 More frames makes smoother video
Frames/Sec: 24 More frames plays video faster
Total Play Time: 6 sec. Num of views × FPV / FPS
+ ((Num of views - 1) × Secs Paused) × FPV/FPS

Ending Logo
Image File: Browse
 Add Logo Duration: 4 sec. Background:

Capture Cancel