

Anatomage

TABLE

Cadavers

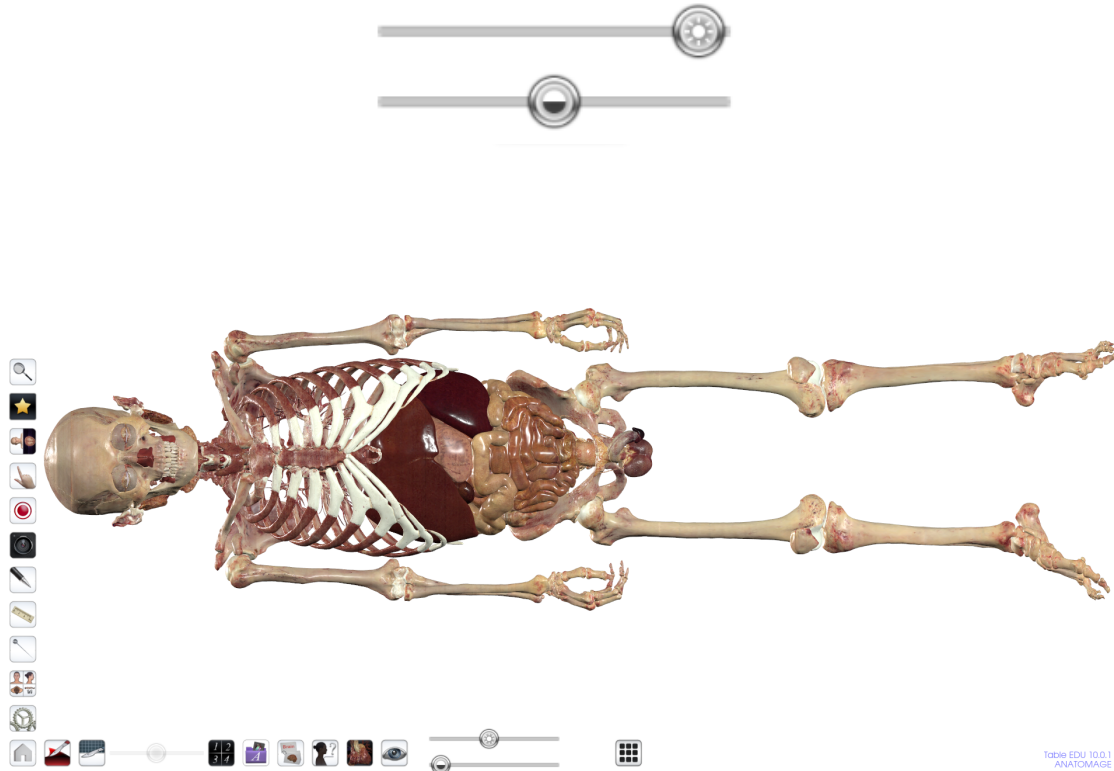
How to Use the Slider Bars

Table of Contents

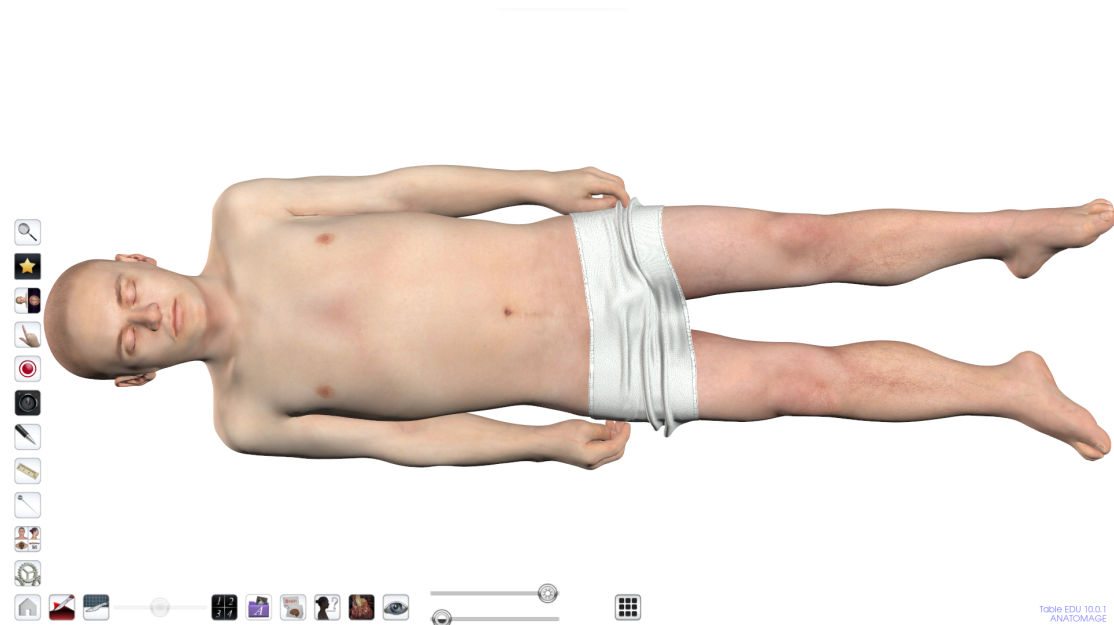
How to Use the Top Slider Bar	1
How to Use the Bottom Slider Bar	2

How to Use the Top Slider Bar

Step 1: When a scan is loaded into the Table software, slide the top slider bar to the left to peel back layers. The volume will be removed, superficial to deep, until no volume remains.

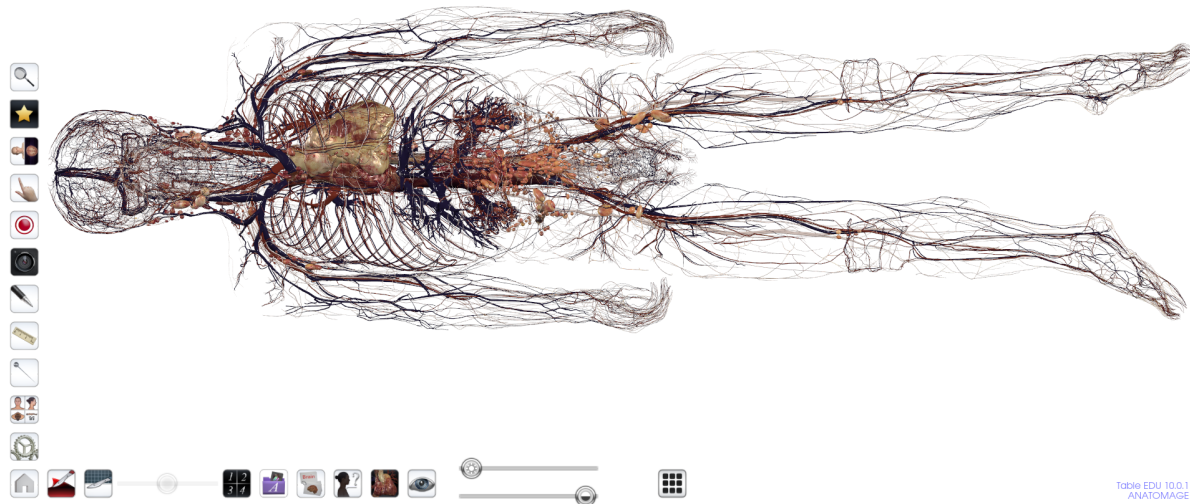


Step 2: Sliding the top slider bar to the right will add in layers, deep to superficial, until the full volume is on.



How to Use the Bottom Slider Bar

Step 1: With the top slider bar all the way to the left, sliding the bottom slider bar to the right will bring in arteries, veins, nerves, and lymphatic branches in that order.



Step 2: Sliding the bottom slider bar back to the left will remove all of these branches.

