

# *Anatomage*

# TABLE

## Cadavers

### How to Take a Screenshot

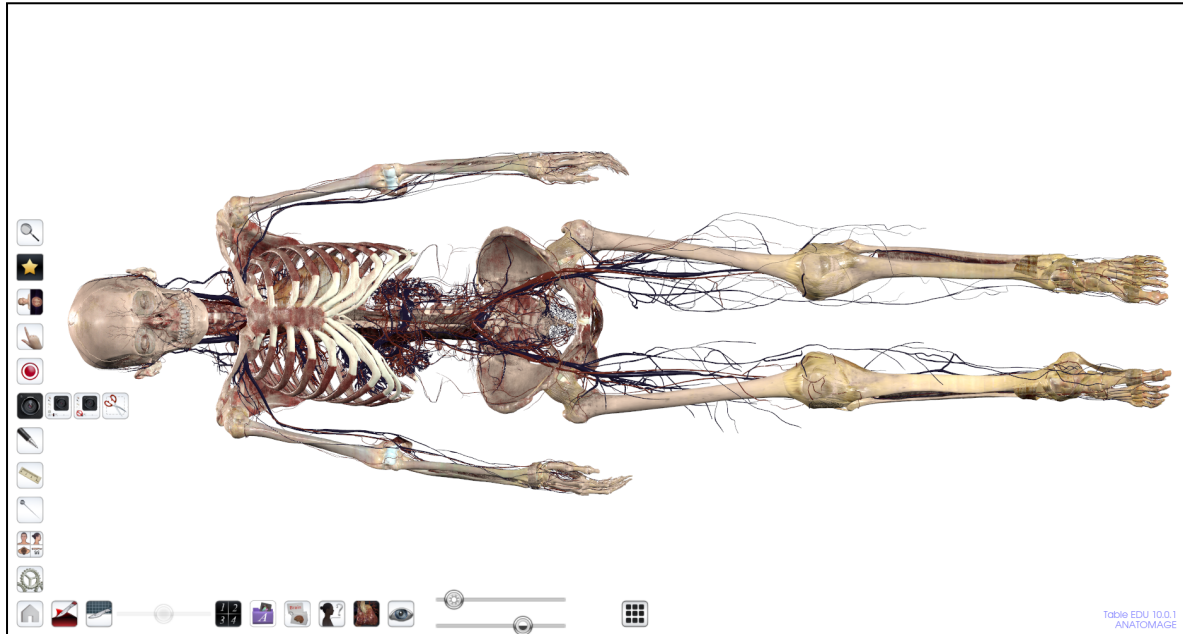
#### **Table of Contents**

|   |   |
|---|---|
| How to Take a Screenshot of the Whole Table With Icons    | 1 |
| How to Take a Screenshot of the Whole Table Without Icons | 2 |
| How to Take a Custom Screenshot                           | 3 |

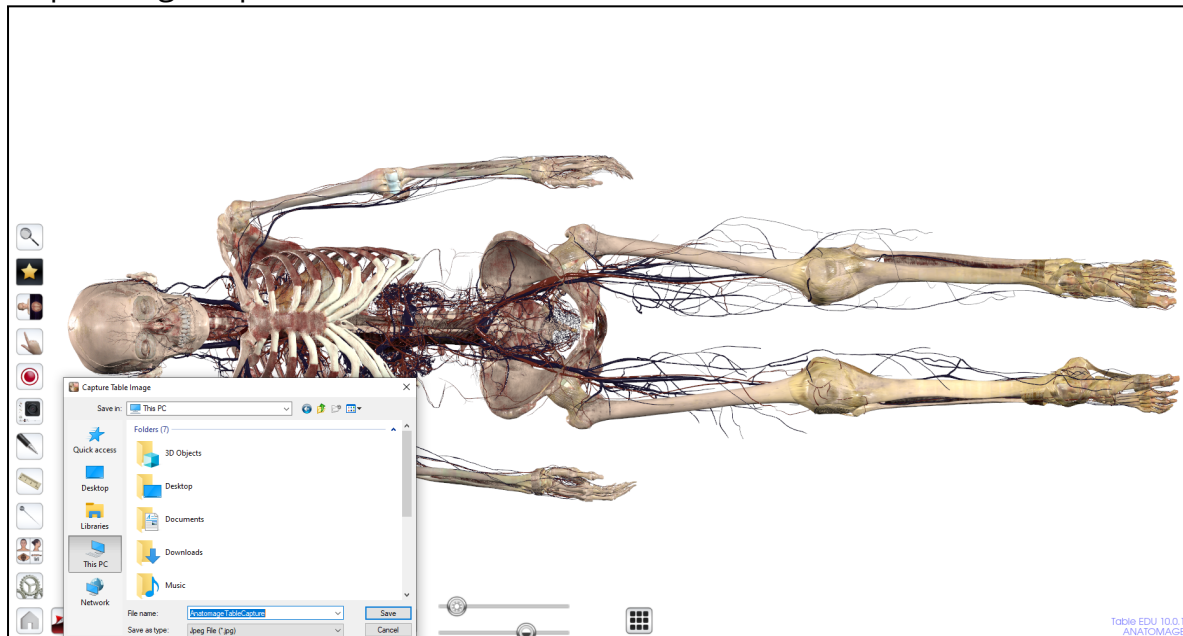
## How to Take a Screenshot of the Whole Table With Icons

Step 1: Single tap the screenshot tool icon . The icon will expand to show

the following icons.   



Step 2: Single tap on the Screenshot with Icons Icon.

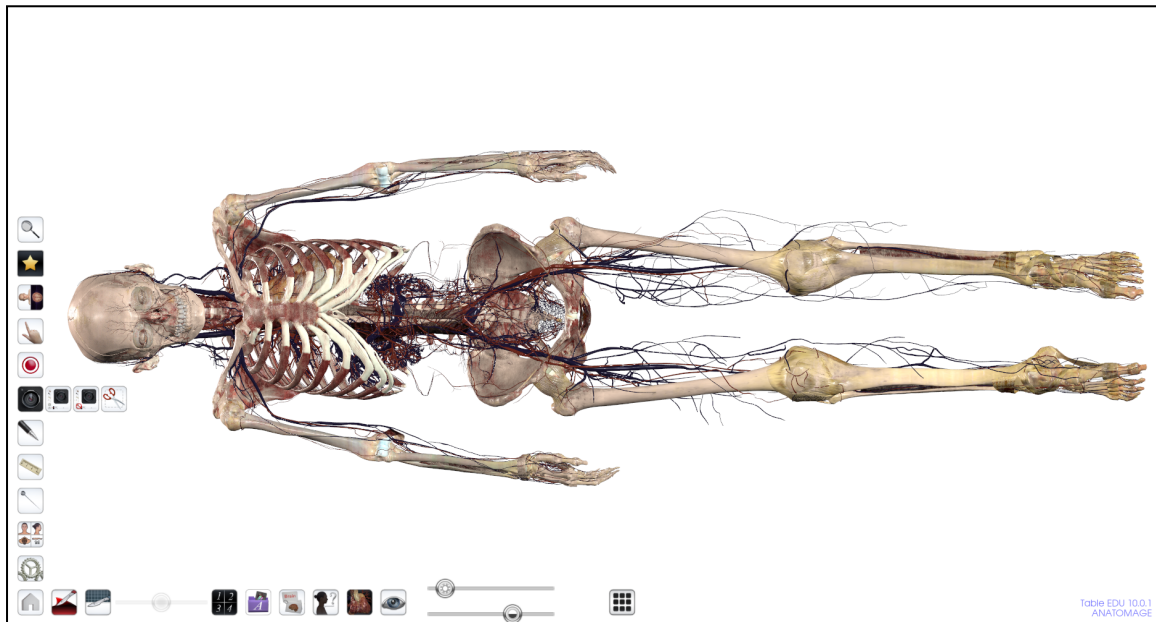


Step 3: In the save box that opens, save the screenshot as a .jpg file to your USB.

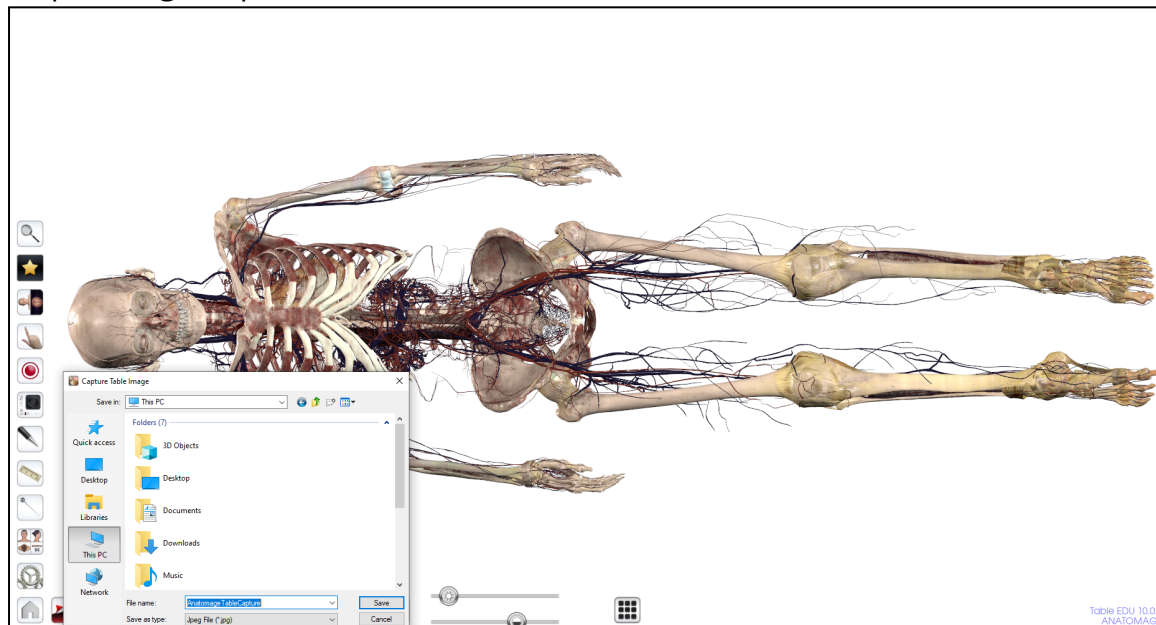
## How to Take a Screenshot of the Whole Table Without Icons

Step 1: Single tap the screenshot tool icon . The icon will expand to show

the following icons. 




Step 2: Single tap on the Screenshot Without Icons Icon.

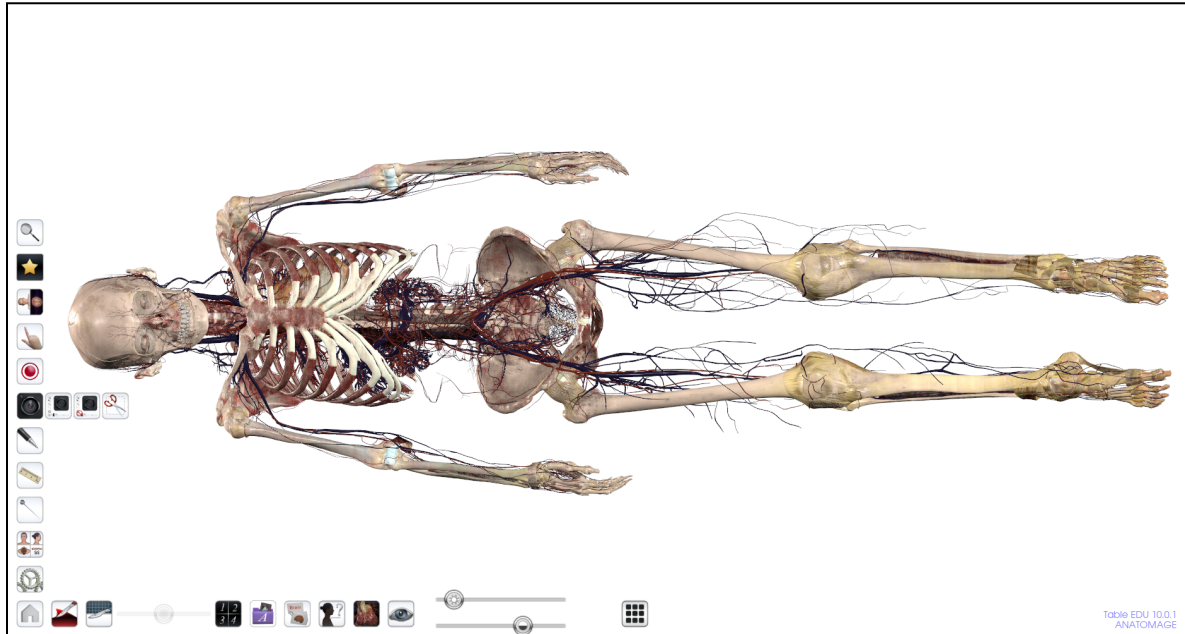



Step 3: In the save box that opens, save the screenshot as a .jpg file to your USB.

## How to Take a Custom Screenshot

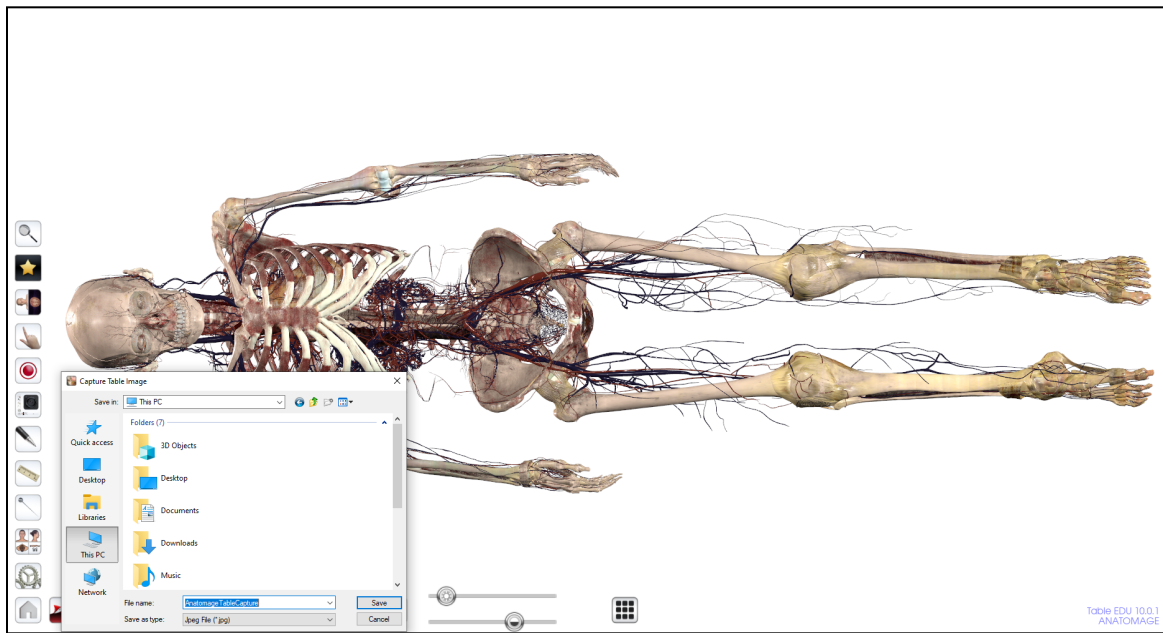
Step 1: Single tap the screenshot tool icon . The icon will expand to show

the following icons.



Step 2: Single tap on the scissor icon to take a custom screenshot .

Step 3: Starting from a corner, stretch your custom screenshot to include the image you would like to take a screenshot of.



Step 4: In the save box that opens, save the screenshot as a .jpg file to your USB.